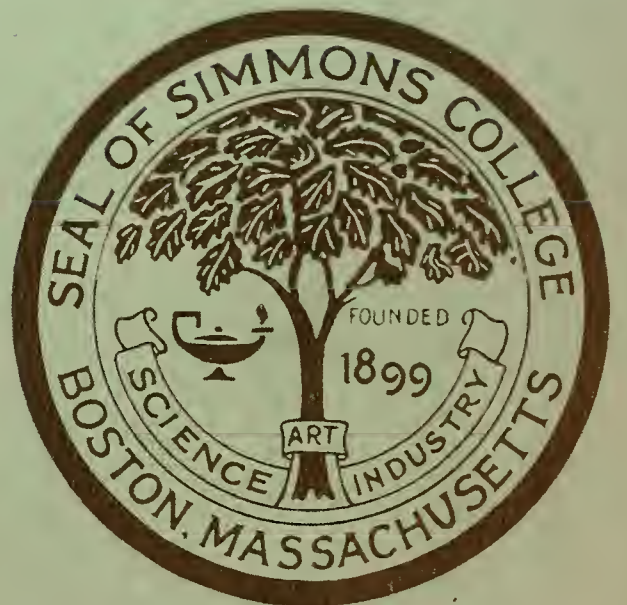


# MICROCOSM

1957



SIMMONS COLLEGE  
LIBRARY





**MICROCOSM**

**1957**

## IMAGES

Our life is like some vast lake that is slowly filling with the stream of our years. As the waters creep surely upward the landmarks of the past are one by one submerged. But there shall always be memory to lift its head above the tide until the lake is overflowing.

Images of time past, from the day we first came to the spring that was the beginning of our years in the small world. Having traveled from that place, down the river, we stand on the shore where the waters meet the sea. Before us lies the ocean, the sun sparkling on its surface—bright with promise.

*Now this is not the end. It is not even the beginning of the end. But it is, perhaps, the end of the beginning.*

—W. Churchill



*Published by the students of*  
SIMMONS COLLEGE



300 the FENWAY, BOSTON, MASS.







## FACULTY— ADMINISTRATION

As some vast river of unfailing source, rapid, exhaustless, deep, their numbers flowed, and opened new fountains in the human heart.

These men and women were the source of our College—the original spring from which the waters flowed toward the sea, carrying with them the uninitiate to be taught and to be guided. From them we gained breadth of mind, help, inspiration—deep, wide, steadily, the river runs into the future.

*What wisdom can you find  
that is greater than kindness.*

*—Rousseau*



*William E. Park, President—Progress needs a guide.*



*Mrs. William F. Chapman, Assistant to the  
President—The hand that opens the door.*



*Mrs. Kimball Gonyea, Registrar—Beginning and  
the ending; Registration and Diploma.*

*Jane E. Curtin, Acting Director of Admission—  
Keeper of the keys.*



*Eleanor Clifton, Dean—The art of understanding.*



*Richard K. Bachelder, Comptroller—Holder of the purse strings.*



*Mrs. Harris J Bixler, Assistant to the Dean—Always time for one more*





*Anna M. Hanson, Director of Placement—Our passport to the future.*



*Emily G. Webb, Director of the Office of Resources—Tapping our resources.*



*Kenneth R. Shaffer, Director of the Library—Lifeline to the library.*



*Dr. Marjorie E. Readdy, Director of Health—Pills and sympathy.*



*Mrs. Gustaf Broadcorens, Director of Publicity—The eyes and ears of the Simmons world.*



*Bernice J. Poutas, Executive Secretary of the Alumnae Association—Our link to past and future.*

*Joseph G. Needham, Vice-President—The essence  
of education is the educated man.*



*You give but little when you give of your  
possessions. It is when you give of your-  
self that you truly give.*

*—Gibran*

*Wylie Sypher, Dean of the Graduate Division—  
The open door policy.*





*Mrs. Rolf Arvidson, Adviser to the Class of 1957—The pupil's choice.*

*A Teacher Affects Eternity.  
It is the supreme art of the teacher to  
awaken joy in creative expression and  
knowledge.*

*—Einstein*



*Faculty meeting—The brain trust.*





*Philip M. Richardson—Science is organized knowledge.*



*Stephen R. Deane—Rejoice with them that do rejoice, and weep with them that weep.*



*Bruce C. Hawthorne—A single conversation is better than ten years study of books.*

*But the most notable part of teaching is the imparting of knowledge, the communication of ideas. Its ideal is to have two minds share a single thought.*

*—Barzun, revised*



*Judith Matlack—To teach is to create.*

*Paul R. Nichols—The hand that follows intellect can achieve.*







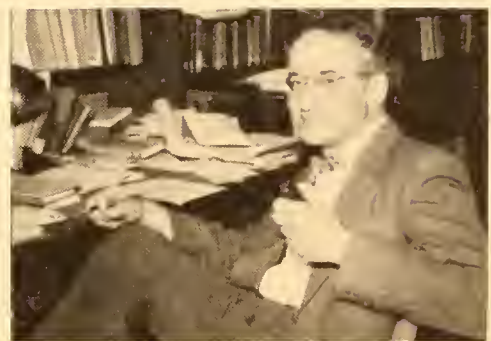
*Edith F. Helman—A wisdom that is charm.*



*Royal M. Frye—Sage of Science.*

*Far more seemly were it for thee to have  
thy study full of books than thy purse  
full of money.*

*—John Lyly*



*Manfred Klein—Intermingle jest with earnest.*

*Margaret Rowe—She who hath good  
health is young.*



*Lyle K. Bush—One picture is worth a  
thousand words.*





## CLASSES

*For all the school's a stage, and all the women merely players; they have their exits and their entrances. And one woman, here, plays many parts, her acts being four stages. First, the freshman, with shining morning face discovering the city and the school; next the sophomore, sighing like furnace, with woeful ballad to college life. Then the junior, full of strange oaths and the wisdom of the sage. Last scene of all, that ends this strange eventful history, is senior year, great knowledge, and departure from the stage.*



*Freshman Reps—Margaret Powell; Barbara Hatfield; Gretchen Laun; Carolyn Clark; Janet Whitney; Priscilla Haines; center, Sandra MacLean.*

The Class of '60 came in like a whirlwind during Orientation Week. Acquaintance dances were their debut in Boston and the Class got to know itself at the Freshman banquet for commuters and dorm students. The most important activity was organization—class officers, a faculty adviser, and a blue and silver raccoon to lead the way. Quickly they developed class spirit and became a part of Simmons. The Bib Party with the Juniors started faculty-student relations off with many laughs, and by the time blazers were ordered in the spring, the Class of 1960 was an old-timer.

## CLASS OF 1960

*A square meal in a box lunch.*





*Back yard breather . . . contemp. books and college scarves.*



*Freshman Class officers — Patricia Hipple, President; Gretchen Marsh, Secretary; Sandra Baker, Vice-President; Susan Bloom, Treasurer.*



*And Sophomore year meant posters and posters and posters.*



*Sophomore Class officers — Patty Lou Baker, President; Joan Halpert, Secretary; Patricia Grant, Treasurer; Mary Kerr, Vice-President.*

Taking part in Leaders' Workshop started the year for the Class of 1959. Soon one of their representatives took over the planning of one of the earliest and most popular all-college events—Christmas Cotillion. There were many other things to be done throughout the year: the organization of the Valentine Party for the freshmen, the prom, Sophomore Luncheon, Soph Auction, and May Breakfast.

Finding skunks hard to come by, the class mascot was changed—rings and keys were ordered—hour changes were debated—in short, a busy, productive year.

*Class mascot — DEB*



## CLASS OF 1959

*And Sophomore year meant skits  
at Soph Luncheon.*



*Junior Class officers — Standing:  
Eleanor Nilson, Secretary; Anita  
Oppenheim, Treasurer; Seated:  
Nancy Sandler, President; Gail  
Kyett, Vice-President.*



## CLASS OF 1958

*"Here we come a wassailing . . ."*







*From a man's point of view.*

The Class of 1958 started its year by welcoming its sister class, making them feel at home. Later the Junior and Freshman Classes were united through a candlelight ceremony.

After school got underway, the Juniors took over Leaders' Workshop and managed skit night. At Olde English Dinner, Juniors served as carolers and provided some of the entertainment for the Seniors and the faculty. With the coming of spring came worries about Junior Prom and Spring Spree. Finally, at the last Step Sing, they captured the steps and, in June, formed the traditional Daisy Chain.

*Class mascot — HEFELUMP.*





*Smiling Seniors pre-test their caps and gowns.*

## CLASS OF 1957



*Class mascot—HEINZ.*

Heinz led the Class of 1957 in the first Step Sing of the year and found it a change to be looking down from the steps. The political campaign, with a new significance since many of us could vote, swept us along until the dragon appeared to entertain rapt audiences at Olde English Dinner.

Senior-Faculty Dinner, Senior Luncheon with the presentation of roses, May Day Breakfast—Heinz ate and talked and, in the Placement Office, looked toward a job. Graduation was the climax of the year, of four years, and everyone celebrated during the festivities of Senior Week.

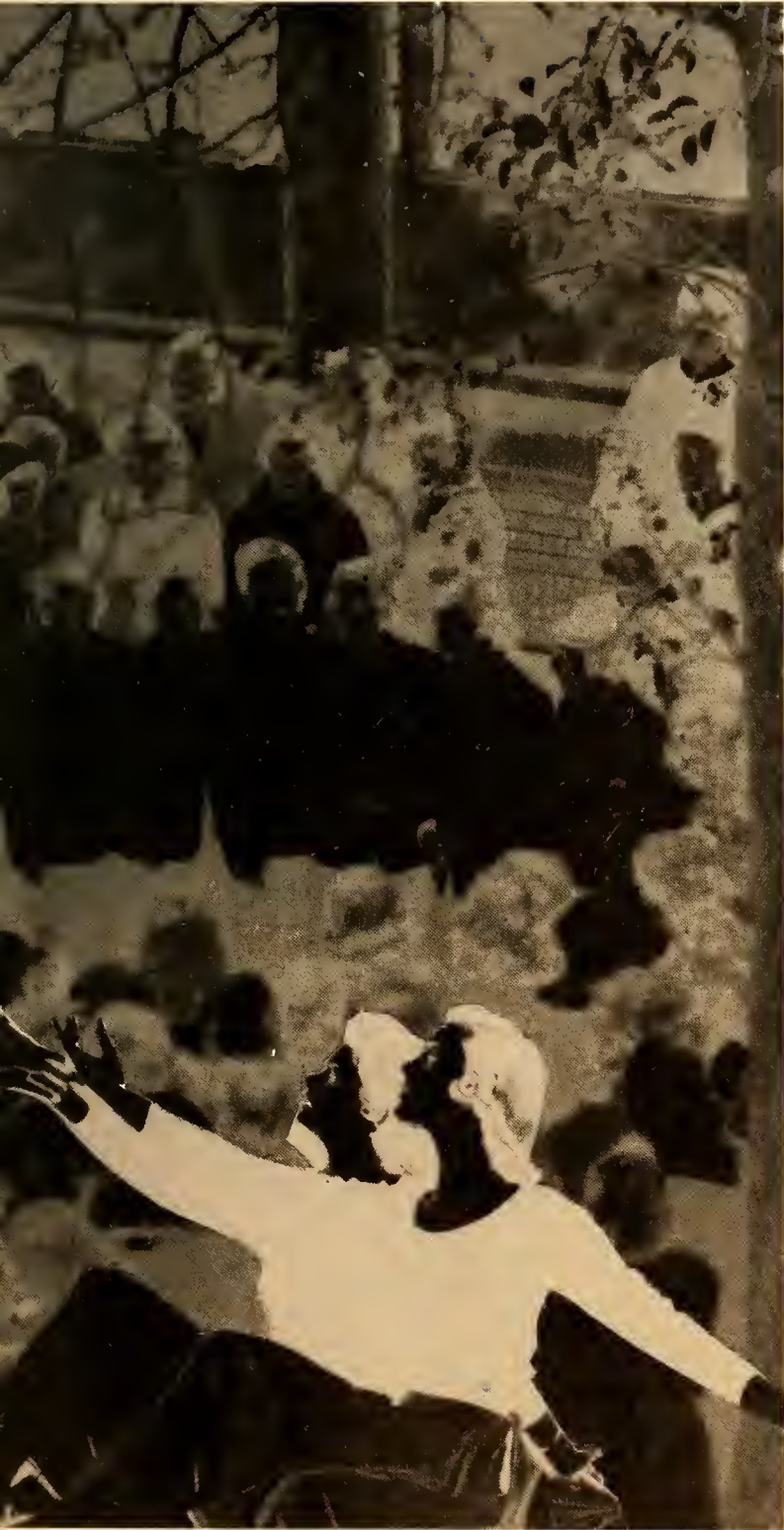


*Senior Class officers—Standing: Barbara Buckley, Secretary; Barbara Miller, Vice-President; Seated: Carole Jaques, Treasurer; Elizabeth Spencer, President.*

*Dear Folks,  
Tonight was our first Freshman activity . . .*







## ORGANIZATIONS

Time is a sort of river of passing events, and strong is its current; no sooner is a thing brought to sight than it is swept by and another takes its place, and this too will be swept away.

—Marcus Aurelius

Yet it formed a pattern—the clubs, committees—constantly growing and changing. There was a place for each of the diverse interests and talents . . . and we worked and played and directed our energies into multiple currents. Thus was the running of our small society learned—to be used ultimately in a larger world.



*Student Government Council—Front: Sandra MacLean; Virginia Wright, President; Margaret Eberlein; Second Row: Julia Collins; Janet Phillips; Evelyn Dowd; Mary Sughrue; Third Row: Joan Daley; Margaret Russell; Lynne Goldinger; June Gonzalez; Fourth Row: Florence Pressman; Elizabeth Ray; Fifth Row: Judith Block; Jean Ann Schlegel; Gretchen Hanlon; Susan Parker.*

## STUDENT GOVERNMENT

Acting as a connecting link between faculty, administration, and students, the aim of Student Government is to advance the educational and intellectual growth of the college community. It represents the largest possible number of the

student body and is designed to further the interests of the entire College. The major effort this year was the improvement, through simplification, of the all-college election system.

## HONOR BOARD

Working unobtrusively for the most part, Honor Board is intrinsic to the spirit of the College. A student-elected body, it has the responsibility of enforcing the principles of the Honor System, educating the students to the System, and publicizing and adapting the System to meet changing needs. Honor Board facilitates living at Simmons, and exemplifies it.

## SENATE

To investigate and recommend in any matter concerning the student body—this is the function of the new Senate. Wide representation gives it the force of opinion throughout the school. Still under evaluation, Senate deals with such varied problems as the overcrowding of the lunchroom and possible installation of a room inspection system on campus.



*Honor Board—Harriet Farrell; Roberta Brown; Barbara Buckley; Helen Lunger; Janet Phillips, Chairman; Joan Buckley; Sylvia Coutts; Constance Gray; Jesselyn Carvalho.*



*Senate—Standing: Nancy Glynn; Nancy Dexter; Lorraine Kechejian; Helen Klein; Marilyn Mason; Valerie Wilcox; Arden Hertzog; Celeste Limoges; Seated: Robin Cram; Patricia French; Carole Jaques, Moderator; Jane Opdycke; Joan Winter; Barbara Buchwald.*



*NSA—Front: Ellen Jarvis; Carol Peacock; June Gonzalez, Chairman; Naomi Greenfield; Back: Gretchen Kimball; Amy Gordon; Marilyn Brynes; Lynette Chandler; Frances Lalli.*

## N S A

Every student at Simmons is a member of NSA, the National Student Organization of college governments that works toward the progress and improvement of student life throughout the world. Representatives from Simmons attend local, regional, and national conferences to exchange ideas with students from other colleges. This year, a regional conference was held at Simmons. NSA is becoming more important as the years pass and students become more aware of the need for better communication with all students on a national and international level.

## LEADERS' WORKSHOP

Leaders' Workshop is a Sophomore project sponsored by NSA. Any member of the Class may participate in the meetings and projects which go on throughout the year. It aims to acquaint the student with the problems of leadership and to keep student organization a growing movement. This year's commissions investigated College etiquette, social activities, and existing traditions as a part of their project and for the use of the new College Handbook.

*Leaders' Workshop—Seated: Ellen Jarvis; Carol Peacock; Frances Lalli; Standing: Helen Klein; Gretchen Hanlon.*





House Presidents' Council is the campus branch of Student Government Council and is responsible for the coordination of social activities, house councils and other campus organizations. It also acts to maintain the rules covering dormitory students and serves as a final board of appeals. Working closely with the Director of Students and the Manager of Residence, House Presidents' Council is also in charge of planning many of the campus traditions.

## HOUSE PRESIDENTS' COUNCIL



*House Presidents' Council—Seated: Marilyn Dolin; Shirley McNeil; Margaret Eberlein, Chairman; Barbara Harju; Jane Adams; Genevieve Guzik; Standing: Sandra Holland; Barbara Linington; Joan Brady; Ruth Angell; Patricia Keegan; Phyllis Flaherty.*



*Social Activities—Genevieve Guzik, Julia Collins, Donna Howland.*

## S O C I A L   A C T I V I T I E S

Responsible for all campus recreation, Social Activities plans and directs dances, parties, and door decoration, skit nights, teas, demi-tasses, and sit-down dinners. Its individual representatives work with their own dorms on brunches and other recreation. A representative on Dorm Council helps to keep it in coordination with the other committees on campus.



## F O R U M

Forum is an all-college organization whose purpose is the integration and strengthening of the political, social, and cultural interests of the students. Panel discussions, debates, and informal discussions are held throughout the school year.

*Forum—Front: Dawn Anderson, President; Heather Nason; Back: Bailey Haines; Patricia Rhein.*

## A A

Automatic membership in the Athletic Association opens a range of activities to the Simmons student—from tennis, swimming, and riding, to golf, archery, and badminton. High points of the year are the skiing trips, and the basketball and baseball competitions with the faculty.



*AA—Patricia Hanlon; Cherrill Cahoon; Lee Jansen, President; Eleanor Olson.*



*Lynne Goldinger, Editor-in-Chief.*



*Enid Feldman, Emily Post, Dianne Kofman.*

NEWS requires no explanation, it is so intrinsic and important a part of Simmons. Every Thursday the circulation staff rushes copies to the crowds waiting in the front hall, the cafeteria, and in the dorms. A new six page format kept us posted on the Who? What? Where? When? Why? and How? of the College. All considered, NEWS has proved itself a newspaper of the students, by the students, and for the entire School.

# NEWS

*Ina Karelitz; Frances Chiabrandy; Lynne Goldinger, Editor; Fay Zerinsky; Marcia Kovara.*





*MIC Staff—Front: Constance Costigan; Elaine Gaysunas; MIC; Helen Jean Addison; Sylvia Chiesa; Marjorie Melnick; Sarah Stout; Back: Roslyn Mateles; Ruth Lane; Penelope Karageorge; Mary King.*

## M I C R O C O S M

For everything there is a season, but there were times when the editors of *Microcosm* would have been hard put to say even what day it was. There was a season for layouts, for photographing, for organizing, and for panicking. All received full measure before this Yearbook saw the light of day and peace returned once more to the Editors' office. The innovation for this year's staff was a Student Government allocation enabling them to begin without bills. Inspired and aided by cooperative faculty members and willing friends, the MIC staff toiled on and breathed a sigh as the last deadline was safely passed.



*Co-editors—Risa Rickman, Janet Shapiro.*

# A C A D E M Y



*Academy—Front: Jo-Ann Showstack; Vanli Poshyachinda; Mary Marsh; Doris Bode; Margaret Sawyer; Middle: Constance Pennington; Betty Hurwitz; Nancy Hodgkins, President; Carol Peacock; Elizabeth Spencer; Back: Judy Berman; Marilyn Dolin; Sylvia Coutts; Jeannette Grise; Risa Rickman; Margaret Eberlein; Jean Lee; Dawn Anderson.*

Academy is the academic honor society of Simmons College. The right to wear the blue and gold ribbon on the senior academic gown comes after a student has maintained a 3.2 average for 64 semester hours. Academy sponsors a tea in the fall to welcome new members and an annual banquet in the spring.



*Ellen Richards—Seated: Patricia Gallant, President; Nellie Yee; Standing: Mary Henderson; Shirley Kimber; Electra Yankopoulos.*

## ELLEN RICHARDS

The Ellen Richards Club, for students in the School of Science, brings together the different branches of science. As members of the Inter-Collegiate Chemical Society, the Club meets with other science students and tours Boston's places of scientific interest.



*Physical Therapy Club—Seated: Eleanor Olson; Audrey Haugaard, President; Mary Dreier; Standing: Sandra Holland; Renee Chasalow; Maureen Brodbine.*

## PHYSICAL THERAPY

The Physical Therapy Club includes undergraduates in physical therapy, and some fifth-year students. It serves two purposes: to acquaint each girl with an idea of what her profession entails; and to have all physical therapy students meet and share their common outlooks and interests.



*Anne Strong—Seated: Jean Pierce; Marie A'Hearn, President; Ann Coughlin; Virginia Brainard; Standing: Patricia McGuerty; Judith Gaudrault; Martha Lyon; Patricia Ramsdell; Christine MacLean.*

## ANNE STRONG

The Anne Strong Club for nursing students serves as the link between the undergraduates and the fifth-year nurses on affiliation. Speakers from local hospitals are included at the meetings, bringing members up-to-date on the latest medical techniques, and about the fields open to them.

# HOME ECONOMICS CLUB

The Home Economics Club increases knowledge and interest in the various fields of home economics and develops professional attitudes among students. Members often meet jointly with other college Home Economic Clubs and with home economists in various areas as speakers. In December there is a Christmas party for the Nickerson Home for Children. Featured events of the year are the baking contest held with the faculty, and a May banquet.



*Home Economics Club—Standing: Carol DeStefano; Joan Kenerson; Seated: Elizabeth Webster; Lilly Panella; Mrs. Macktoroff; Margaret Young; Ann Schmidt; Joan Walters, President; Christine Rush.*

# PRINCE CLUB

The Prince Club offers Juniors, Seniors, and graduates of the School an opportunity to learn about their profession on an informal level. Although their activities are restricted by a lack of time, the club sponsors a fall Open-House at the Prince School — to which the College is welcomed. It serves also as a contact for all the students with the field of retailing and its newest developments.



*Prince Club — Seated: Barbara Miller, President; Standing: Barcy Procter; Joan-Kenney; Sara McCraw.*



## POLITICAL THOUGHT AND ACTION

PTA stands for Political Thought and Action, and the purpose of the club is not only to provoke thought, but active political participation on the student level. The Young Democrats and Young Republicans, under PTA, did volunteer work during this year's national election.

## SOCIAL RELATIONS

Social Relations is one of Simmons' most active, important, and worthwhile organizations. Through Social Relations, students go into hospitals, schools, settlement houses, and institutions to do volunteer work. They not only perform a service for the community, but gain experience in teaching, social work, and community work.



*Political Thought and Action Club—  
Ruth Angell, President.*

*Social Relations—Steffi Lewin; Carolyn Cohen; Constance Pennington, Chairman; Miriam Canner; Inez Kurn; Linda Abramson.*



## BLUETTES

The Bluettes are one of our more popular traditions. Expanded from an octet to a triple quartet, the Bluettes have sung at the University of New Hampshire, and most of our College functions. Ambassadors of good song, their singing is widely known and appreciated.



*Bluettes—Bottom: Roberta Bamford; Anita Oppenheim; Sandra Bashore; Middle: Patricia Baker; Helen Lunger, Leader; Elizabeth Spencer; Top: Donna Howland; Joan Dexter; Susan Hausman.*

## GLEE CLUB

No college is complete without a Glee Club. The Christmas Concert, the assemblies, and Simmons Night at Pops add extra enjoyment to our days here. This year, to clarify the position of the Club, it was placed directly under the sponsorship of the administration, along with all other music groups.



*Glee Club—Patricia Baker; Evelyn Wolff; Nancy Garland, President; Susan Davis; Frances Hardy.*

# MODERN DANCE CLUB

*Modern Dance Club—Meryl Gray; Leslie Markensohn, President; Hermine Levin; Eleanor Clarke.*



The Modern Dance Club stimulates student interest in the various facets of the dance. Members gain technical skill through the creative activity of the Club's programs. Although Modern Dance requires a great deal of time and work, the finished product presented in the spring at their annual program is full reward. Self expression is the main factor and the program is choreographed entirely by the members. Excerpts from the production are part of the Spring Spree entertainment. The Club also works with other clubs and associations to provide entertainment for many social activities on campus.

# SOCK AND BUSKIN

*Blithely the spirit . . .*



The name of Sock and Buskin, the Simmons dramatic society, is derived from the Elizabethan theater, and symbolizes comedy and tragedy. Anyone who is interested in any phase of the theater may belong. The Club works primarily with experimental theater—the plays of Saroyan, Goya, Shakespeare, and the Greeks. In addition to its own productions, it supervises class Compets, provides scenery and props, and acts in a general advisory capacity to each class participating. Members of the society paint their own sets, and provide their own lighting, props, and costumes. Visiting directors supplement and educate the members. Future goals include continued development of the experimental theater, possibly a short pre-Christmas production, and eventually a theater of its own.

*Sock and Buskin—Nancy Kratzsch; Maybelle Hauser; Marilyn Miller, President; Linda Altman.*



## POSTER COMMITTEE

Since every organization may not have an artist, the Poster Committee is organized to publicize College events through a poster service available to any Simmons organization. The committee of ten to fifteen girls operates informally, on a slight-profit basis.



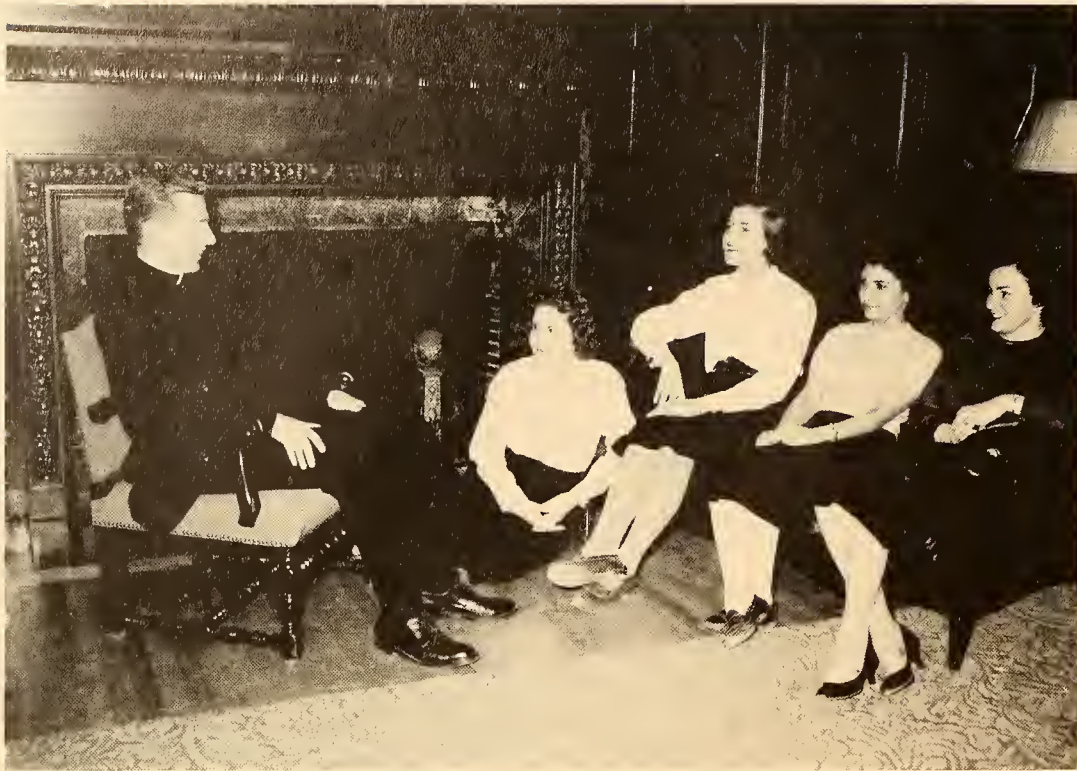
*Poster Committee—Roberta Goldberg; Nancy Kratzsch, Chairman.*

The Outing Club combines outdoor activities with friendship and fun. Skiing, hiking, cycling, sailing, camping; fall, winter, spring . . . the Outing Club has a planned program to fill any sport or season. Joint trips and meetings are held in cooperation with other college outing clubs, and a spirit of a common interest and experience shared makes these gatherings more than worthwhile.

## OUTING CLUB



*Outing Club—Seated: Barbara Richmond; Patricia French; Barbara Goodell, President; Carol Steele; Standing: Gayle Saunders; Carol Curry; Faith Limric.*



*Newman Club—Father McKernan; Genevieve Guzik; Barbara Petroski; Joyce DeSilvia, President; Ann Schmidt.*



*Hillel Club—Bottom: Roslyn Mateles, President; Muriel Finkel; Top: Gail Kyett; Rose Levinson; Carol Korb.*

## NEWMAN CLUB

The goal of the Newman Club is to combine intellectual education with Catholic learning. As a member of the New England Province, Simmons Newman Club joins with Tech, Boston College, and Holy Cross in outings, dances, and religious programs. At the monthly meetings, members gain knowledge of the doctrines of the Church. Discussions of theology, philosophy, and the Catholic way of life are held.

## EASTERN ORTHODOX CLUB

The Eastern Orthodox Club at Simmons was founded in 1947. Although its main emphasis is on religion, the Club participates actively as a social organization in cooperation with other Orthodox clubs of the Greater Boston area. An annual event is the Christmas party, held this year in conjunction with Harvard. The Orthodox Club is a member of the New England Federation of Orthodox Clubs, and participates annually in the Federation Conference.

## HILLEL

B'nai B'rith Hillel functions to meet the cultural, religious, social and educational needs of the Jewish Simmons student, its purpose being to develop an interest in Jewish living and thinking. A faculty panel on the subject "Humanism in Religion" was featured this year, along with student panels, study groups, a speaker on the Near East, a music program, a picnic, and the annual Mother-Daughter Tea.



*Orthodox Club — Venice Cahaty; Penelope Karageorge, President.*



IVCF—Seated: *Gail Falconer, President; Sandra Sutherland;* Standing: *Joan Egeris; Miriam Kent; Nora Aiken.*



## IVCF

An international organization, the Inter-Varsity Christian Fellowship is designed to bring Christian students into fellowship with other Christians through prayer meetings, Bible studies, and discussion groups. Conferences are sponsored by the New England Area IVCF, bringing many chapters together both intellectually and socially.

## CHRISTIAN SCIENCE

The Christian Science Organization was founded in 1912, and is one of the oldest organizations of its type at Simmons and in the country. The Club's main activity is religious; weekly meetings marked by readings and testimonials are participated in by all members. A speaker comes in the fall, and a reception is held in the spring in cooperation with the Mother Church.

## CHRISTIAN ASSOCIATION

The Christian Association is part of a national and international movement that strives to unite student Christian associations around the world. The Club's goal is "worship, study, and action." Service projects are sponsored throughout the year in nearby hospitals and settlement houses. The Club contributes to the relief of war-ravaged countries, and to international student relief.



*Christian Science—Arden Hertzog; Mrs. Folk; Geraldine Hale, President.*

*Christian Association—Seated: Gretchen Kimball, President; Carolyn Butler; Standing: Dorothy Luke; Elaine Paulson.*







## SPECIAL EVENTS

Between the things that had to be done, and the things that should have been done, and the things that would have been done if there had been the time, we sandwiched the bright spots—those happenings that meant especially Simmons. The traditions, new and old, that were long anticipated; the special occasions that were over so quickly; and the time spent doing those important things: talking in the cafeteria, wandering the corridors keeping up on the news, and always, the rush to do the work that kept activities active. And these things were the spice of life.

# ALL COLLEGE CHRISTMAS WEEKEND



*One enchanted evening . . .*



*A moment to remember . . .*

*Saturday swing . . . imported jazz.*



*Beauty and the boots.*





*Seventh inning stretch . . .*

*You and the night and the music . . .*

*We went to the animal fair . . .*





*Campus campaigning . . .*

*Bib party . . . what's in a name?*



*Olde English . . . Yes, Virginia, there IS a Santa Claus.*

*May Day . . . long procession and shortcake.*



## TRADITIONAL EVENTS

Simmons is traditional, and some of our favorite memories stored up for the future are the "traditions." Soph Luncheon, May Day Breakfast, Olde English Dinner . . . just a few of the very memorable occasions that we shared in and that made us "belong." We got together with our classmates, formed committees, wrote skits, made sure there was enough punch and that our favorite faculty members were invited. We held our breath till everyone came, and then had a wonderful time. Simmons traditions fired us with Simmons spirit. We had a sense of continuity with all those shadowy people who had shared in them before us, with those classes who would come after us. Simmons is tradition, the tradition of people, of classmates.



*Olde English . . . Ah! Ha! The dragon, he is dead.*



*May Day . . . great oaks from little acorns grow.*



## SPRING SPREE— PARENTS WEEKEND TREASURE ISLAND

*Spring Spree . . . scientific auctioneering.*

*And they wrote the words themselves.*





Spring Spree is one of the happiest Simmons traditions. When the snow has melted, and the back yard is finally green, the Simmons family breaks out in a carnival atmosphere and celebrates. There's a sunfilled weekend with something for everyone; Pops night at Simmons when the Glee Club serenades parents and students . . . Treasure Island Day—festive booths in the back yard, games for little sister, "Daddy, take a chance," the student-faculty softball game . . . Pirates' Paradise Dance . . . And Sunday is Mother's Day Dinner. Spring Spree is one wonderful occasion when the *whole* Simmons family: students, parents, faculty, administration, get together in a carefree atmosphere, have a gala time, and discover how nice it is to be a part of the Simmons community.



*Sez who?*

*Avast matey's, a Spanish galleon enters the bay.*





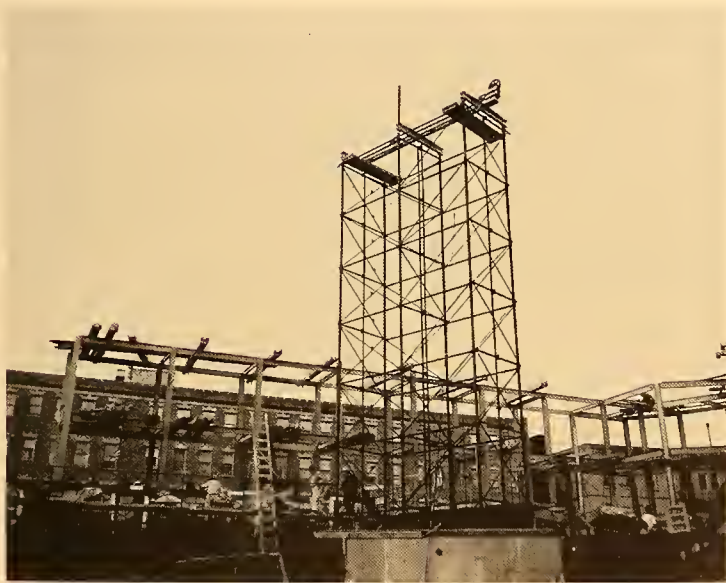
*When shadows fall . . .*



*Closing time . . .*



*After-dinner music . . .*



*Framework for the future . . .*



*The womanly art of self-defense . . .*



## CANDIDS

*Majority opinion . . .*

*Cafeteria caucus . . .*

*House Seniors . . . focus on Freshmen.*



*Did he say he'd call back?*





*Add it to the collection.*



*Patience and permissions.*

*A vote of confidence.*







## SCHOOLS

Ideals are like stars; you will not succeed in touching them with your hands. But like the seafaring man on the desert of waters, you choose them as your guides, and following them you will reach your destiny.

—Schurz

Each of us made the choice, the start toward a profession which was our goal. More and more entirely we were absorbed by one of the schools. And it would come to make up not only our future, but our past—memories of rooms, equipment, labs, smells, sounds, familiar sights.

# SCHOOL OF BUSINESS

The School of Business is the symbol of a modern Simmons, and the modern woman. Originally the school for girls with "flat heels and a purpose," now designed for the "girl in the gray flannel suit." The business student is the girl who is capable, attractive, who has definite and dynamic goals. The School of Business is the clickety-clack of typewriters, the hieroglyphics of shorthand, the operation of business machines, the theories of economics, the principles of advertising. The first law is efficiency. The School of Business is the door to "opportunities unlimited," the starting point for girls with goals that are diverse and exciting; the girl with ideas, purpose, and ability.



*Woodrow W. Baldwin,  
Director of the School of Business.*



*Advertising is friendly persuasion  
Isabella K. Coulter,  
Professor of Advertising.*

The tape measure might well be the symbol of the School of Home Economics. The first inch is the first good cup of coffee—analyzed and finally brewed to perfection; the ability to make a kitchen produce good food comes at the first foot marking; tailoring at the next; and at the end, ability to cook for a thousand and design clothes for anyone. A thoroughly scientific course, they are fitted for a great deal more than a competence with the vacuum cleaner in their own homes. Dietetics, nutrition, teaching, research, advertising, writing—all areas welcome them. Armed with a copy of *Consumers' Guide* and backed by their experiences in home management house and the nursery school on campus, they face a future of a thousand opportunities. And they are, perhaps, the only entire group at Simmons who need have no qualms about running their own homes.



*Measure for measure . . .*

## SCHOOL OF HOME ECONOMICS

*Food for thought . . .*





*Margaret L. Ross, Director of the  
School of Home Economics.*

# SCHOOL OF LIBRARY SCIENCE



*The world of books . . . their never-ending source of fascination.*



*Kenneth R. Shaffer, Director of the School of  
Library Science.*

The School of Library Science is like a long shelf of books—containing volumes that are fascinating, difficult, erudite, amusing—all of which must be catalogued. From those days spent among the stacks with the Dewey Decimal, to the study of the most modern library methods and evaluation of fine book design, the students labor diligently and become expert. One of our oldest schools in age and prestige, its members have only to step outside the front door to have their choice of the many jobs offered. Endless research amidst the reference books which must be absorbed in their entirety gives these students a range of knowledge that opens their field to them . . . which gives the last book on the shelf the traditional happy ending.



*Mrs. Evangeline H. Morris, Director of the  
School of Nursing.*



*The fifth and final year.*





*Sophomore Summer . . . vacation-time?*

## SCHOOL OF NURSING

The School of Nursing is a hospital corridor, with classrooms at one end and professional studies at the other. Between them lies a ward full of patients, an operating room full of fascination, a laboratory full of bottles and a utility room which always needs cleaning. The way along this corridor is not a fast push in a wheelchair—it is a long walk on tired feet with never a dull moment. After the sciences, psychology, liberal arts, and practical courses are the days of making beds and giving medications, and finally a competence in the work of the good nurse. Alternately with the thousands of nights “on call” and the mornings which come too soon are the antics of the class as one or another is momentarily overcome by hospital procedure but survives to fight with medical students another day. Rewarding, exhausting, rich with new sights and learning—these are the days of the Simmons nursing student.

# PRINCE SCHOOL OF RETAILING



*World-wide tour . . . in fashion.*



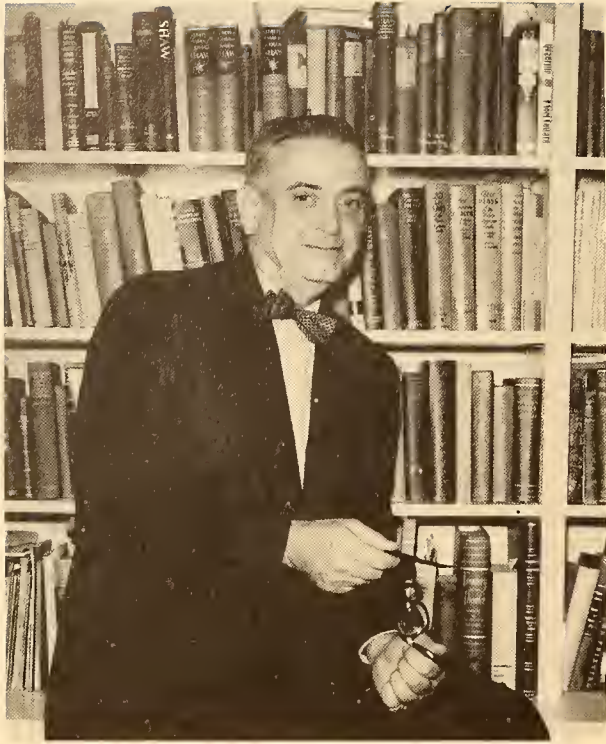


*Donald K. Beckley, Director of the Prince School of Retailing.*

Although we may know the Prince School of Retailing primarily as a fleet of taxi-cabs which bears girls toward the outside world of fashion and glamour, beneath the surface lies a well-trained mind equipped to handle personnel problems, labor relations and the executive handling of sales forces. With a solid business backing gained in their basic professional courses, they tackle the complexities of finance, advertising, store management and market research. During their period of practice work, their initiation is completed. When Prince girls besiege the world of retailing, not only are they dressed beautifully for the fray, but they have the knowledge and experience required by an exacting profession.

*The executive . . . after hours . . . shown in a student-produced fashion show.*

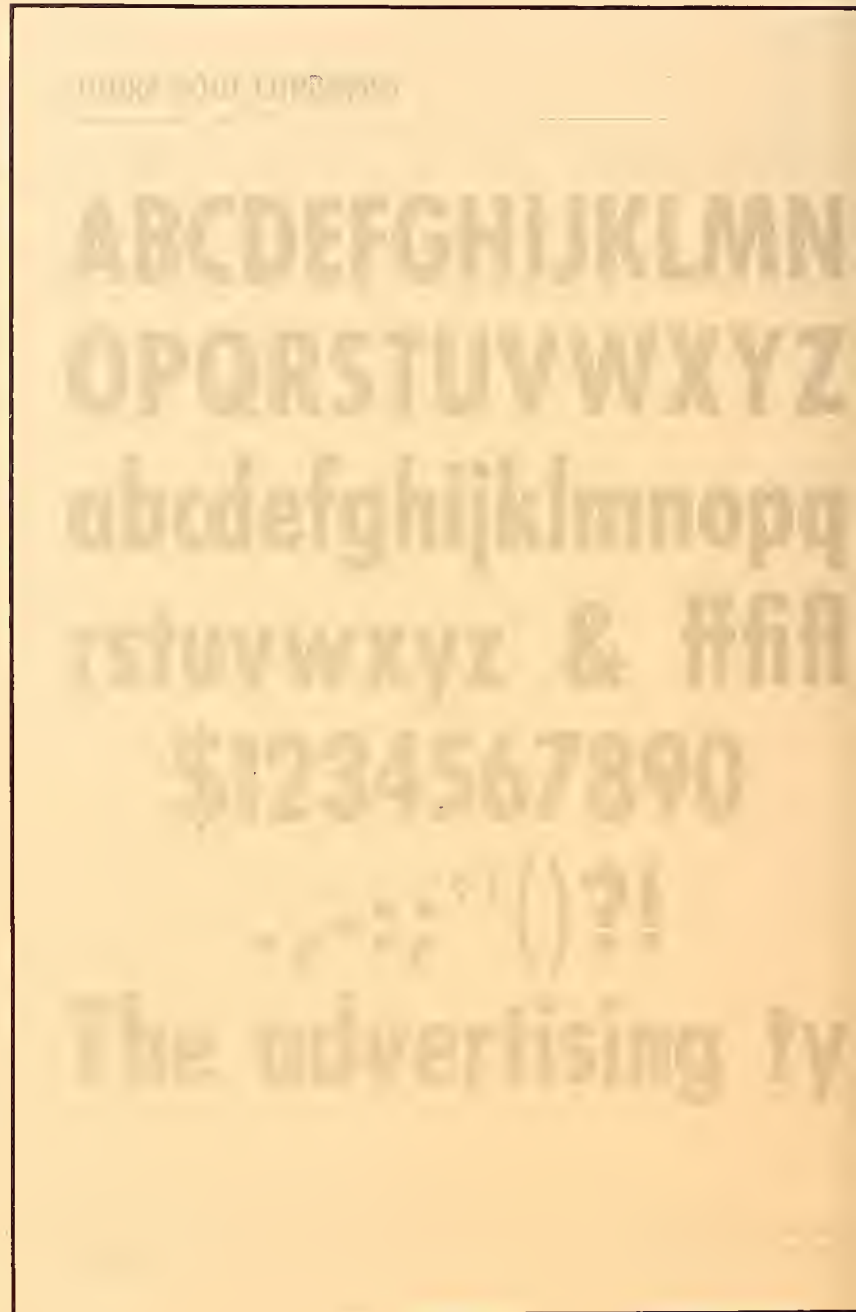




*Raymond F. Bosworth, Director of the School of Publication.*

The School of Publication is the Printshop, a world of words and work. And she who passes through Pub is propelled by blood, sweat, tears, and Bosworth. The Pub student is inked up, bleary eyed, harrassed, and oddly enough, a very happy person. She suffers from a malady, a disease caused by preoccupation and fascination with the lure of the printed word. The Pub School is marked by a unique "esprit de corps," for blood is thicker than water but ink is thicker than both. The Pub student is the frustrated or not frustrated writer, the woman of ideas, the future seller of truth, the hawker of truth in picas, truth in type, truth in print. The thesis-like Valz project, with the staggering demands it makes on all her faculties, teaches her one thing: that she has mastered her craft. The Pub School is a world of words, of work, of people, Ginny, Fez, Dotty, Boz; of places, the Gay room, the printshop, a world quite fascinating.

## SCHOOL OF PUBLICATION





PRINTING OFFICE

ABCDEFGHIJKLMN  
 OPQRSTUVWXYZ & \$123  
 abcdefghijklmnopqrst  
 uvwxyz 8 fi 0 - - % ! ? " ( )  
 he careful advertisin

*. . . Friend, you stand on sacred ground  
 THIS IS A PRINTING OFFICE . . .*



*Dino G. Valz . . . Project!*



*Donald L. Fessenden . . . All hail  
 our noble friend!*



*Weldon Welling, Director of the School of  
Social Science.*

The facets of the School of Social Science are legion. Utterly defying classification, its varied job goals are in equal number to its members. Psychology, Economics, Sociology, History, are all important and a part of the whole. Nor does its being the school closest to a liberal arts education prevent it from having a large practical experience. Volunteer Work is more than a community service—it makes up a broad range of experience forwarding the educational goal. Work done at Boston Psychopathic Hospital, Settlement House and other Boston institutions is worthwhile in any field graduates may ultimately choose. As a door to government work, community work, future study, and the financial and personnel fields, Social Science offers a choice and diversity of learning which makes it one of the most popular schools at Simmons.

# SCHOOL OF SOCIAL SCIENCE



*Cigarette break between classes gives rise to an impromptu seminar.*

Although it is not an undergraduate school, the School of Social Work is well-known and widely respected. A two-year program for college graduates, it affords the student an opportunity to combine fundamental courses with field work and thus gain an understanding of the philosophy of social work and the concepts which guide the worker; later, there is a chance for specialization and continuous responsibility. To attain their Master's degree, students take courses which will give them insight and allow increased capability in the practical aspects of their work.



*Robert F. Rutherford, Director of the  
School of Social Work.*

## SCHOOL OF SOCIAL WORK





*Time out between classes.*

*Class hours spent in learning to serve.*



# SCHOOL OF SCIENCE

The School of Science is a test tube, and a natural haven for those who find beauty in precision and clarity of analysis. The School of Science is the key to a telescopic as well as a microscopic view of life; she who looks through the microscope at minutiae glimpses the vast and eternal world of scientific structure. The science student bears the insignia of the lab; occasionally she is partly blown up, burnt up, spotted and speckled. But the laboratory is a constant challenge, a place both familiar and exciting. The science student is biologist, chemist, physicist, perfectionist by nature and craft. She learns that almost-right is not enough. The science student lives in a world of colors, odors, curious formulae; a glass world whose transparency enables her to see with the eyes of the Curies, Einsteins, Pasteurs. Like them, the student seeks solutions in test tubes.



*Fire burn and cauldron bubble.*





*John Arrend Timm, Director of the  
School of Science.*

*The greatest discoveries are yet to be made.*







## SENIORS

Four years of college, four years of laughter, trouble, happiness, and friends, four years of learning and growth. Graduation, senior year, leaving Simmons; all are double-edged swords. The lure of the future, certain or uncertain; the security of the past, each corner traced, lived and remembered—familiarity traded for adventure. The years rushed by as a rapid river, breaking on rocks, swirling giddily, a sudden pool of still water. Together we traveled toward this point, gaining tolerance and memories. We stand together for the last time before answering the alluring call of tomorrow.



**Jane Sherman Adams**  
**Business**

*Quick with a quip . . . sophisticated tomboy . . . the Scot with the Celtic air . . . ebullient vitality.*



**Helen Jean Addison**  
**Publication**

*Refined appearance . . . gigantic sense of humor . . . perfectionist with finesse . . . talent for repartee.*



**Mary Lee Adriance**  
**Nursing**

*Tennis racket in one hand, procedure manual in the other . . . clearheaded and practical . . . a resourceful Yankee humor.*



**Marion Sara Apter**  
**Science**

*Impulsive fun combined with constant alertness . . . never discouraged . . . friendliness is her trademark.*

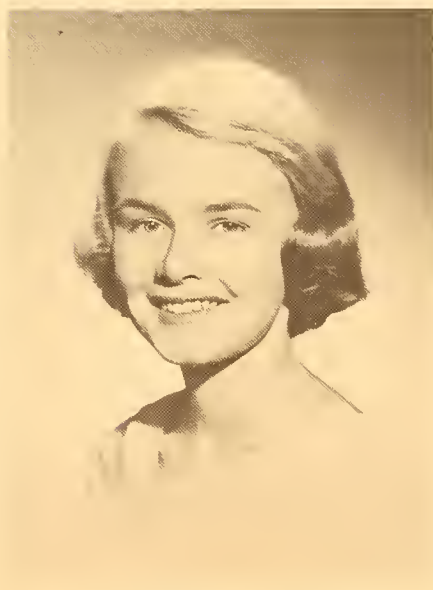
**Ruth Caroline Angell**  
**Social Science**

*A definite, deliberate, devoted Republican . . . fastidious and business-like appearance . . . a lawyer of the future.*



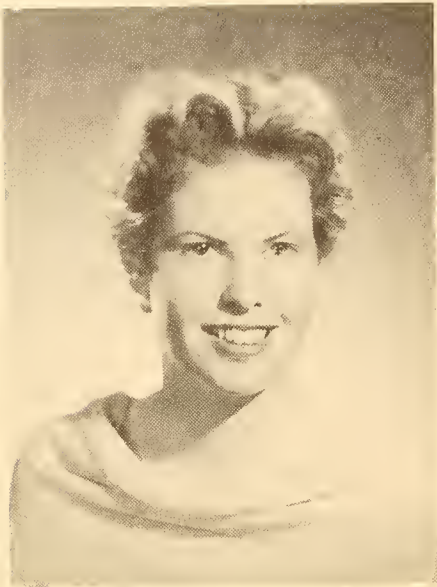
**Ena Almuly**  
**Social Science**

*Genuine interest in any undertaking . . . adept bilinguist . . . trustworthy, the essence of sincerity . . . world traveler.*



**Dawn Blanche Anderson**  
**Publication**

*Pert politician . . . shyness tempered with vivacity . . . flashing wit and blond brightness are unforgettable.*



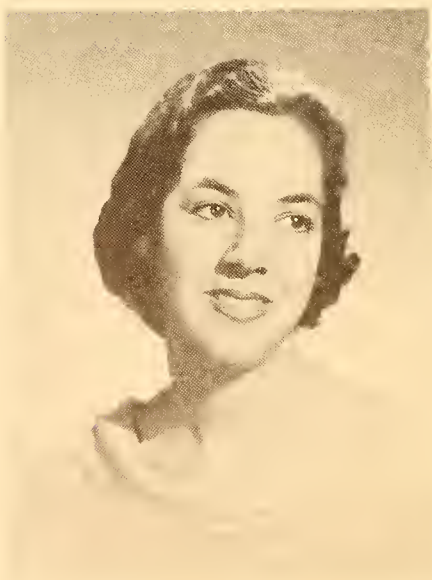
**Barbara August**  
**Social Science**

*Blond brightness . . . quiet insistence  
on perfection . . . a ready word of  
encouragement.*



**Clara Augusta Austin**  
**Retailing**

*Cooperative spirit . . . subtle cynic  
. . . capacity for fun . . . future  
member of the fashion world.*



**Wendy Baker**  
**Nursing**

*Easy-going and soft-spoken . . . the  
lovely dark hair set off by the white  
cap . . . the spirit of charity.*



**Muriel Phylis Baltimore**  
**Science**

*Present tense: scientist; future tense:  
homemaker . . . the sympathetic lis-  
tener . . . complex of practicality and  
romance.*

**Phyllis Rose Bornstein**  
**Science**

*Her smile says what words never could . . . not shyness, but a calm reserve.*



**Gwendolyn June Bickford**  
**Science**

*Calm, cool, and collected . . . her quick smile has won her many friends.*



**Judith Badgers Berman**  
**Science**

*Talent for being a friend . . . ready and able . . . quiet intelligence inspires confidence, respect.*



**Dorothy Bennett**  
**Social Science**

*Immaculate . . . new hair style and a new interest every day . . . facile mastery of fashions.*

**Mary Elizabeth Bennett**  
**Nursing**

*Tranquil manner . . . subdued sense of humor even funnier on the rare occasions it shows up . . . lilting voice.*



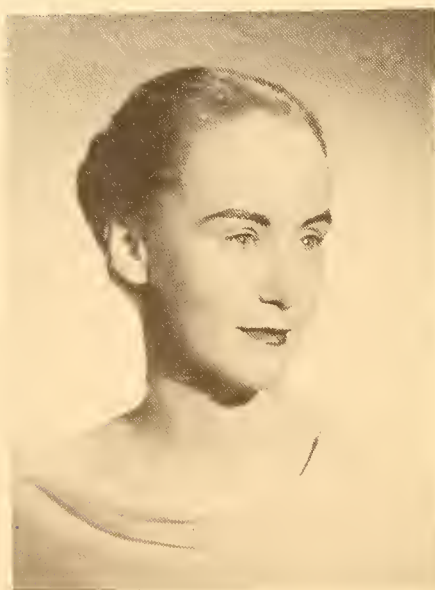
**Nancy Elizabeth Bowker**  
**Nursing**

*Self-contained . . . unostentatious but candid assuredness . . . a valuable colleague.*



**Joan Waring Brady**  
**Publication**

*Sophisticated mien . . . dreamy eyes and a fluent wit . . . mixture of chic and informality.*



**Marion Anita Brody**  
**Social Science**

*A witticism for everything . . . organized approach . . . everything falls into place systematically.*



**Ronna Jo Brickman**  
**Business**

*Ceaseless activity . . . wonderfully alive, she is charming in any setting.*







**Joan Elizabeth Buckley**  
**Science**

*A dreamy dignity . . . conscientious yet capricious . . . our scatter-brained scientist.*



**Barbara Gertrude Buckley**  
**Social Science**

*A friendly grin and a mad dash . . . she's always on the go and knows where she's headed.*



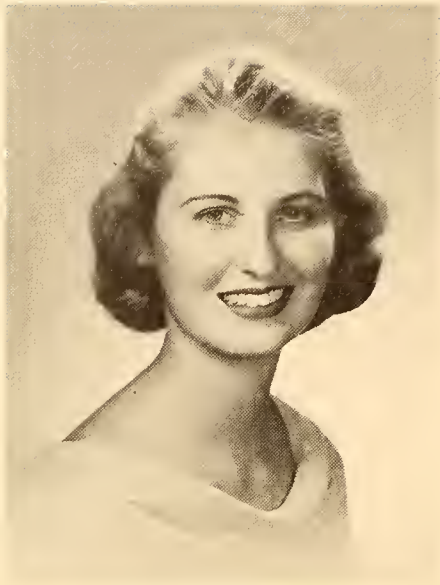
**Renee Phyllis Bruckner**  
**Business**

*Infectious laugh . . . mathematical precision . . . hilarity with a straight face . . . time for work, more time for fun.*



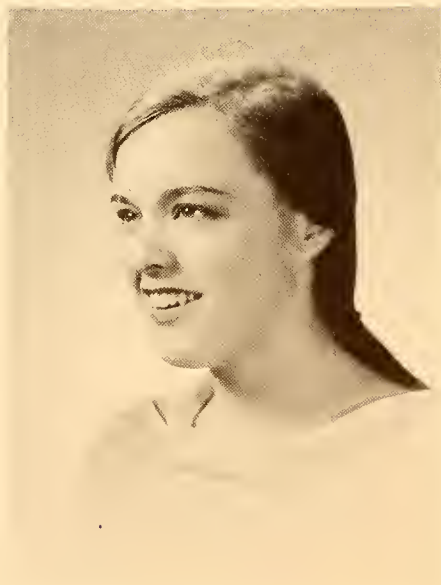
**Phyllis Isenman Buchsbaum**  
**Social Science**

*A dancer's grace . . . smiles come easily . . . busy housekeeper . . . glowing look of fresh vitality.*



**Judith Ann Byman**  
**Science**

*Slender grace and a lovely smile set off her personality . . . quiet, but with dignity.*



**Phyllis Cameron**  
**Nursing**

*Sees the good side of people . . . whimsical and intelligent . . . a recent acquisition.*



**Sylvia Rosita Chiesa**  
**Science**

*Scientist with many extra talents . . . perky, lively, but patient . . . the meaning of efficiency.*



**Frances Ada Chiabrandy**  
**Business**

*Roughish smile . . . the candid remark . . . refreshingly sarcastic, and sincerely good-natured.*



**Emogene Ann Chase**  
**Social Science**

*Our Northern Southern belle . . . keen mind . . . kind heart . . . quick laughter.*



**Nancy Patricia Carroll**  
**Business**

*So lovely and charming . . . a pixie hidden by a veil of prettiness.*



**Renée Lynn Chasalow**  
**Science**

*A scientist's absorption, with a dreamer's abstraction . . . pert profile . . . always the model's poise.*



**Audrey Barbara Cloper**  
**Business**

*Ready for anything . . . calm and collected . . . emerges from every crisis with a smile.*



**Arlene Levy Cohen**  
**Retailing**

*Poised and personable . . . a flair for design . . . the busy housewife.*



**Julia McMahon Collins**  
**Home Economics**

*Personality plus . . . the ability to like people . . . the fresh, bright, original approach.*



**Ellen Elgart Conovitz**  
**Retailing**

*Elegance of manner . . . self-assured . . . immediately became part of her adopted school.*

**Joan Frances Cummings**  
**Retailing**

*Charm, competence, and creativeness . . . blend of sweetness and sophistication.*



**Ruth Gardner Crider**  
**Publication**

*Crisis is routine . . . nimble grace, animated wit . . . coffee, cigarettes, conversation . . . skilled raconteur.*



**Sylvia Allen Coutts**  
**Publication**

*Unplanned proficiency . . . definite goals and the enthusiasm to reach them . . . animated intensity.*

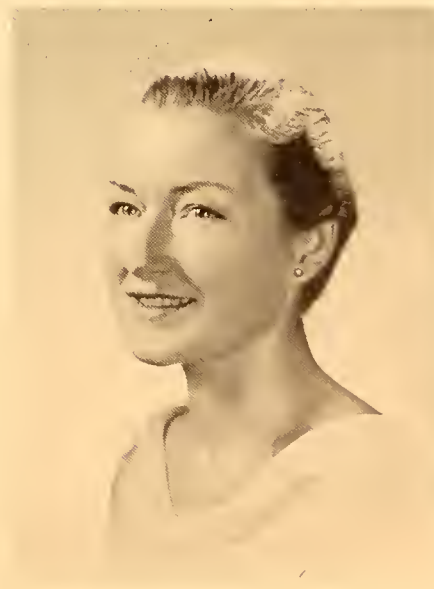


**Constance Frances Costigan**  
**Publication**

*Completely competent . . . stately blondness with an artist's dream . . . never without a drawing board or an idea.*

**Sheila Constance Cormack**  
**Social Science**

*Reserved and unassuming . . . keen-witted . . . affinity for relaxation . . . fluent in Spanish.*



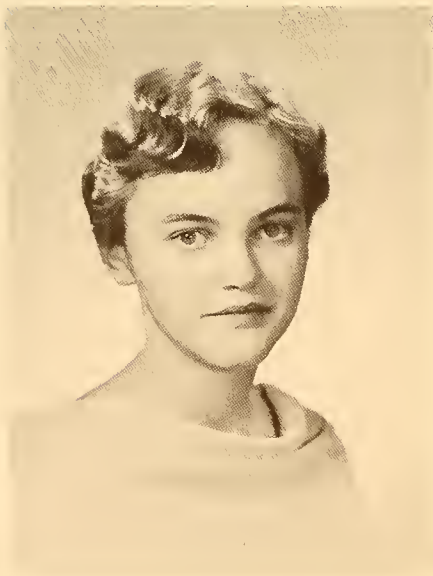
**Joan Paula Daley**  
**Business**

*Erin's sparkle and fluidity . . . flexible spirit with constant efficiency . . . brightens the room she enters.*



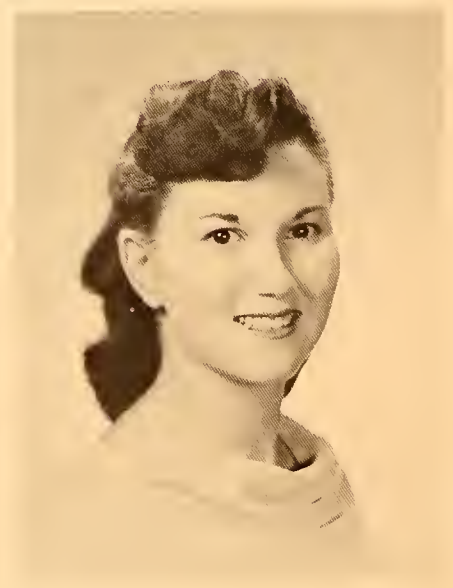
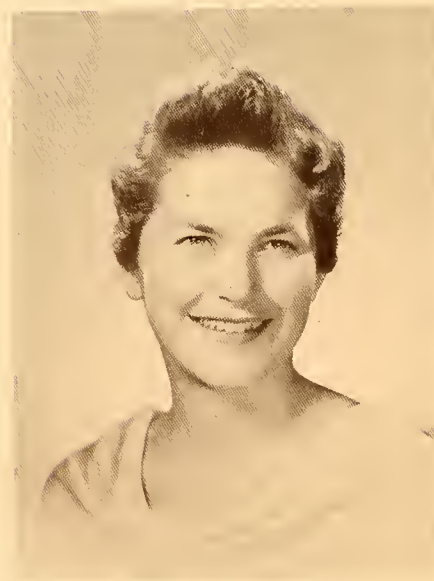
**Joan Louise Damon**  
**Nursing**

*Even-tempered . . . irrepressible intrinsic commedienne . . . good co-worker . . . unexpected buoyancy.*



**Judith Sandra Davis**  
**Social Science**

*Quiet calm . . . concentrated ability . . . lends an air of restfulness and confidence.*



**Judith Hansis Davies**  
**Business**

*Thoughtful and honestly nice successful homemaker and student kittenish and glowing.*



**Patricia Lingley Dickson**  
**Retailing**

*Delightful personality . . . fluctuating moods . . . the original spontaneous remark . . . a loyal friend.*



**Carol Joan DeStefano**  
**Home Economics**

*An addition to anyone's kitchen . . . smiling eyes . . . and quiet wit . . . bubbles like champagne.*



**Priscilla Ann Davis**  
**Social Science**

*Sincere interest in learning . . . future teacher . . . a "down Mainer" . . . realistically oriented . . . the aware individual.*



**Joyce Elizabeth DeSilvia**  
**Science**

*erious at the right moments . . . never without a twinkle . . . impish gentleness . . . air of competence.*



**Julia Ann Dillon**  
**Science**

*Casual exterior with a lust for adventure . . . makes any situation look brighter . . . easy smile.*



**Marilyn Barbara Dolin**  
**Publication**

*Sympathetic confidant . . . amazing energy . . . talented . . . the drug store is her office.*



**Gail Elaine Dontigney**  
**Social Science**

*Cover of Mademoiselle . . . little girl glamour plus the poise of the sophisticate . . . a love of love.*





**Yvette Marie Dowling**  
**Business**

*Enthusiasm for any venture . . . little and lively . . . accepts responsibility graciously.*

**Mary Wilma Dreier**  
**Science**

*Delicious sense of humor . . . radiantly bright as a spring day . . . responsible, cooperative, reliable.*



**Evelyn Jane Dowd**  
**Business**

*Fresh and crisp as a tailored blouse . . . efficiency pleasantly balanced with friendly warmth and personality.*



**Elizabeth Leona Duncan**  
**Science**

*Pretty, poised and sophisticated . . . moves in a group, yet is noticed alone . . . a reserve that is never impersonal.*



**Sylvia Anne Dyke**  
**Business**

*Precise endeavor . . . expert in all attempted . . . glad to share her talents . . . steady and good-natured worker.*



**Margaret Davidson Eberlein**  
**Publication**

*Competent . . . an elfish grin and common sense . . . hurried but never harried . . . wears responsibilities well.*



**Jane Prentice Ettinger**  
**Retailing**

*Elegance in dress and manner . . . creative talent and the willingness to use it for many jobs.*



**Gail Enid Falconer**  
**Publication**

*Tremendous willingness to carry out anything . . . could out-talk a Northerner . . . rarely stops working.*

**Sylvia Ann Flight**  
**Library Science**

*An understanding that reaches out to everyone and a friendliness that draws everyone to her.*



**Phyllis Elaine Flaherty**  
**Social Science**

*Twinkling eyes betray fun-loving thoughts . . . a sense of responsibility and never-failing ability.*



**Natalie Jean Fitts**  
**Science**

*A sports addict . . . sparkling eyes reveal a sharp personality.*



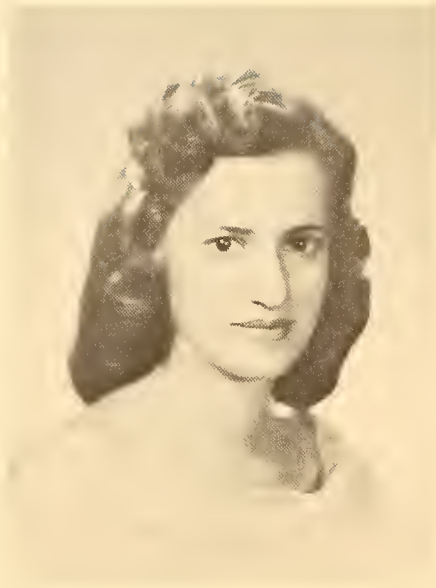
**Constance Lee Fields**  
**Social Science**

*Fascination for art . . . puts heart and soul into her enthusiasm . . . the presence of a dancer.*

**Enid Marilyn Feldman**  
**Publication**

*An enthusiasm that is pleasantly encompassing . . . completely happy and happily complete.*





**Martha Wheatley Foster**  
**Business**

*Willowy blond . . . head in the clouds,  
feet on the ground.*



**Sandra Elaine Frank**  
**Social Science**

*Frantic preparation for her jobs,  
always well done . . . steadily vi-  
vacious . . . inquiring student.*



**Meredith Easter Frazer**  
**Business**

*Impossible not to be cheered by her  
. . . projects completed with talented  
care.*



**Virginia Kuehner Fusick**  
**Nursing**

*From registered nurse to Mrs. to Sim-  
mons . . . on to teaching in a collegiate  
school of nursing.*

**Elaine Anne Gaysunas**  
**Business**

*Eager and understanding, she makes the difficult easy and the complex simple . . . fun-loving.*



**Patricia Ann Gaughan**  
**Social Science**

*Pleasant company in any situation . . . calm and dependable, always willing to listen and assist.*



**Nancy Louise Garland**  
**Social Science**

*Interested in people of all kinds . . . dual artistic ability . . . varied athletic interests.*



**Patricia Margaret Gallant**  
**Science**

*A whirlwind in a white coat . . . frisky and unspoiled . . . reserves are lost in her liveliness.*



**Doreen Gardner**  
**Science**

*Displaced mathematician . . . an appreciation of the comical and an understanding of the serious.*





**Lynne Janice Goldinger**  
**Publication**

*Headlines and deadlines . . . competent editor . . . ingenious prankster . . . rogue disguised by dignity.*



**Irma Joy Goldman**  
**Business**

*Knows what friendship means and includes . . . welcome addition to any group . . . spontaneous remark.*



**Priscilla Stephanie Greene**  
**Science**

*Quiet-spoken scientist . . . subdued and genuine . . . precise and professional . . . hearty laughter.*



**Sandra Malver Goodman**  
**Science**

*Petite miss . . . physiology whiz . . . transfer student who made friends quickly.*



**Kathleen Vetromile Gonsalves**  
**Library Science**

*Great ability beneath a perfect composure . . . representative of the school . . . a perfect lady.*



**June Johnston Gonzalez**  
**Business**

*A smouldering temperament . . . vibrates with intense purpose . . . blazes of energy . . . internationally minded.*



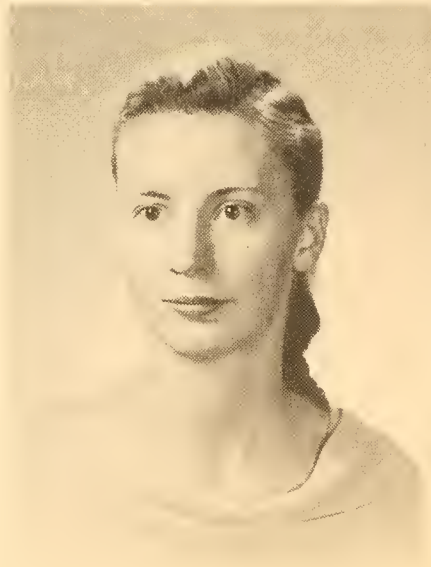
**Barbara Letha Lois Goodell**  
**Business**

*Lover of the outdoors . . . a thinker . . . will write her way through life.*



**Lois Rita Greenspan**  
**Business**

*Friendship taken seriously . . . coffee  
is the staff of life . . . the day begins  
at noon.*



**Jeannette Elizabeth Grise**  
**Science**

*Known by the length of her pony  
tail . . . scholastic prowess . . . a  
lab coat or a formal.*



**Lillian Mavis Guerney**  
**Social Science**

*A helping hand given readily . . . a  
serious smile and a twinkle in her eye.*



**Emilie Anne Gustafson**  
**Nursing**

*Quick and always ready for a joke . . .  
the optimistic insight . . . a good co-  
worker.*



**Joyce Harvey**  
**Social Science**

*Dancing through life, she never misses a step . . . pleasant, witty, willing to work.*



**Barbara Frances Harju**  
**Business**

*Efficiency . . . loves to talk at any hour . . . well-dressed . . . valuable worker.*



**Louise Helena Harian**  
**Business**

*Meticulous . . . down-to-earth . . . high scholastic standards . . . behind-the-scenes worker.*



**Genevieve Mary Guzik**  
**Retailing**

*A flair for fashion . . . campus activities coordinator . . . approaches each day with impish intensity.*



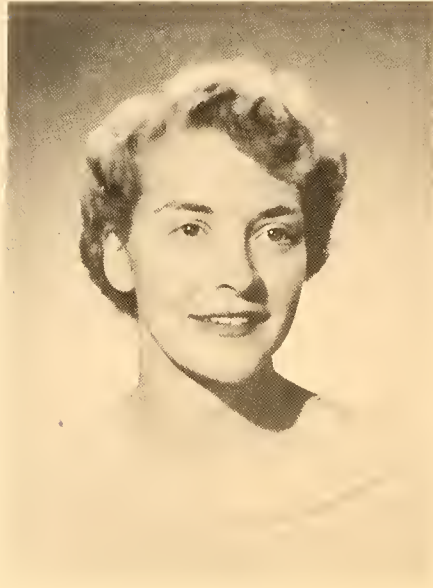
**Natalie Marianne Haddad**  
**Science**

*Neat, petite young lady . . . dark, flashing eyes, bright smile . . . charm of being genuine.*



**Audrey Nielsen Haugaard**  
**Science**

*Poise, charm, graciousness; all the ingredients of a true lady . . . calm and capable, conquers any situation.*



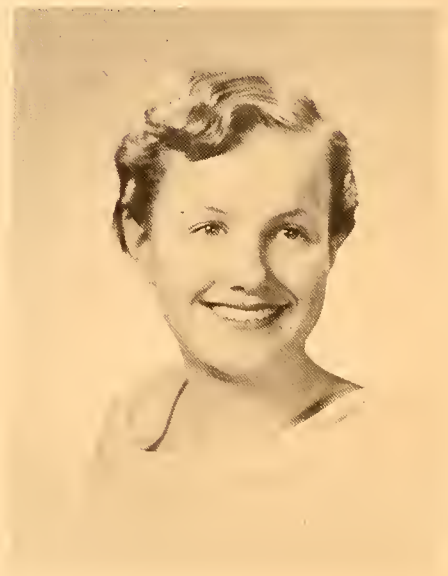
**Maybelle Ann Hauser**  
**Business**

*Wisdom behind a grin . . . Spanish beauty . . . sense of humor . . . she makes life a chuckle.*



**Arden Knight Hertzog**  
**Home Economics**

*The essence of sincerity and unassuming charm . . . a lady in the truest sense . . . unfailingly helpful.*



**Mary Margaret Henderson**  
**Social Science**

*Spark of Ireland in her eyes . . . clothes connoisseur . . . baseball scholar.*



**Muriel Mary Hubbard**  
**Nursing**

*Registered nurse and then to India  
... now on to mental health work, via  
Simmons.*



**Donna Howland**  
**Home Economics**

*The humor in any situation . . . red-  
headed vitality . . . easy-going . . .  
fun-loving . . . spontaneously witty.*



**Nancy Ann Hodgkins**  
**Science**

*Unassuming intelligence in every field  
... dignified poise and a New Eng-  
land strength.*



**Muriel Cashell Holub**  
**Science**

*Easy-going charm . . . versatility of  
the dancer and the scientist . . . capti-  
vating smile.*

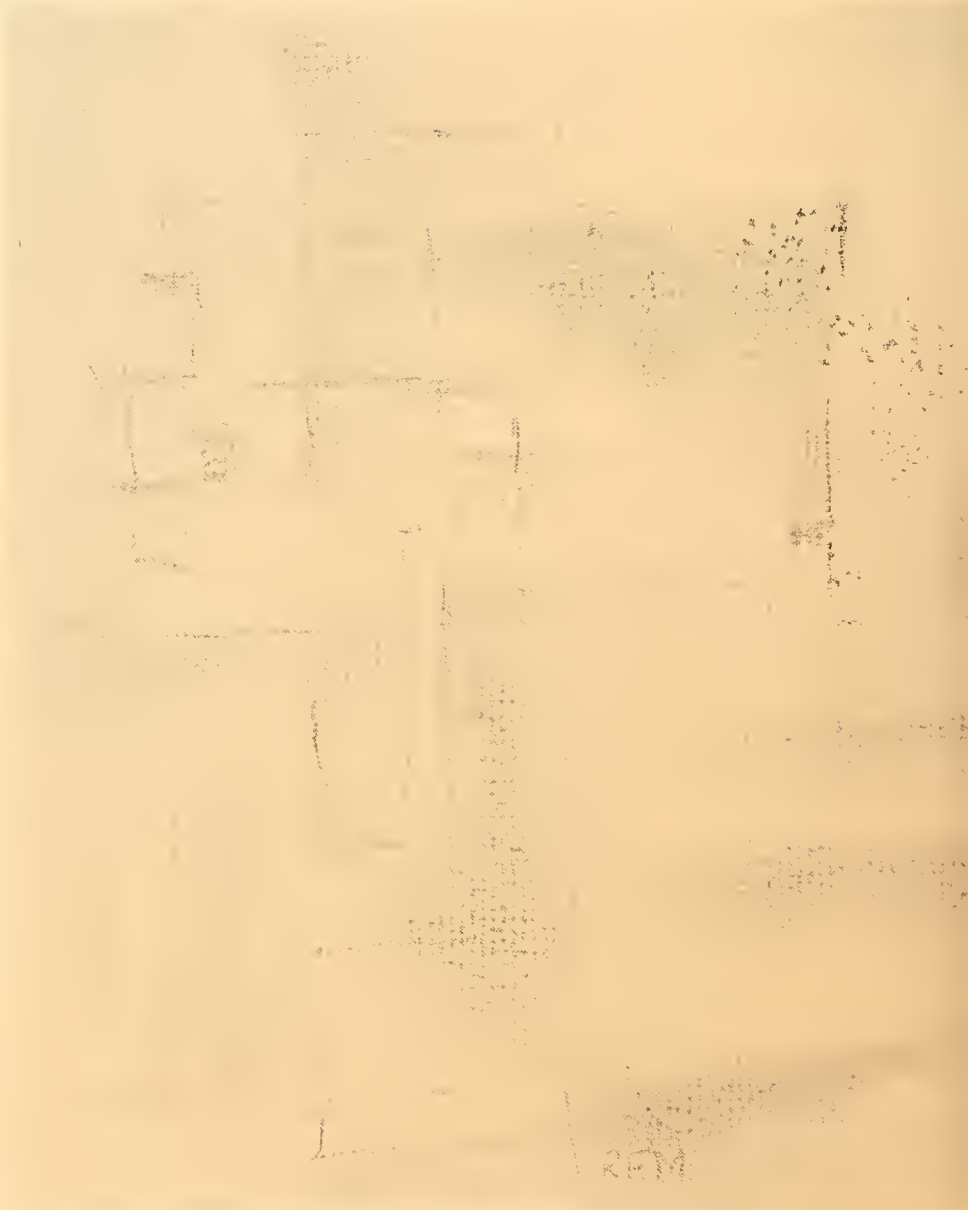
**Lilli Svea Johanson**  
**Nursing**  
*Coed, to M.G.H. and nursing, to  
 Simmons and now teaching?*



**Carole Hayes Jaques**  
**Business**  
*Easy to know and like . . . little girl  
 with a capacity for doing big things.*



**Ilene Edelstein Johnson**  
**Publication**  
*Grecian beauty . . . poise and serenity  
 of an individualist . . . a quiet voice  
 that warrants listening.*





**Lorraine Jo-An Kechejian**  
**Social Science**

*Very lady-like . . . always wearing a smile . . . conscientious student . . . polished and smartly dressed.*



**Sandra Patkin Karp**  
**Social Science**

*Mature . . . quiet reserve . . . adult charm and youthful poignancy.*



**Ina Lee Karelitz**  
**Business**

*A musical whiz . . . sensible handling of many jobs . . . satisfying to work with.*



**Penelope Seveste Karageorge**  
**Publication**

*Charm of the unpredictable . . . slow drawl and quick wit . . . Mona Lisa with the devil in her eye.*



**Elizabeth Keith**  
**Nursing**

*Operating room nurse . . . now turned  
collegian . . . goal in sight.*



**Barbara Ann Kelley**  
**Science**

*Does whatever she sets her mind  
to . . . a study in contrasts . . .  
the sprightly scientist.*



**Kay Robinson Kennard**  
**Retailing**

*Funloving yet practical . . . has a sen-  
sible approach to life.*



**Joan Frances Kenney**  
**Retailing**

*Capable . . . definite personality . . .  
indefinable style of her own . . . poised.*

**Elaine Krauss**  
**Social Science**

*Volatile . . . works hard and plays hard . . . the rare ability of having perspective.*



**Nancy Adelaide Kratzsch**  
**Library Science**

*Original is the word . . . the thespian of skit and play . . . the wry, humorous remark.*



**Marcia Joan Kovara**  
**Publication**

*Cute and perky . . . writing versatility . . . sensibility . . . flair for the original.*



**Shirley Anne Kimber**  
**Science**

*Sweetness and light with depth . . . uncompromising determination that knows when to pause.*

**Mary Evelyn King**  
**Publication**

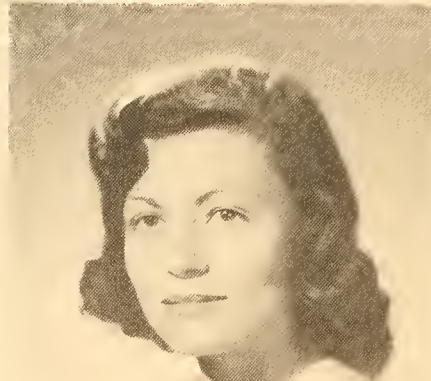
*Stability when things go wrong . . . crisp hair, cool manner . . . a genius for inventiveness.*





**Rosanne Olivia Kunze**  
**Business**

*Sincerity of purpose . . . dancer's poise  
and stately bearing . . . efficiency in  
action.*



**Paula Bloomfield Landau**  
**Social Science**

*Conscientious hard worker . . .  
reassuring smile . . . willing and  
ready to be of help.*



**Ruth Allen Lane**  
**Publication**

*Wisdom with a smile . . . art of put-  
ting friends at ease . . . humor on a  
dull day.*



**Judith Warren Lazzara**  
**Business**

*Never wastes words . . . determined  
and practical . . . capacity for achieve-  
ment.*



**Lucinda Anne Likins**  
**Retailing**

*An inner glow . . . an outer sparkle  
. . . easy air and a rush of vitality.*



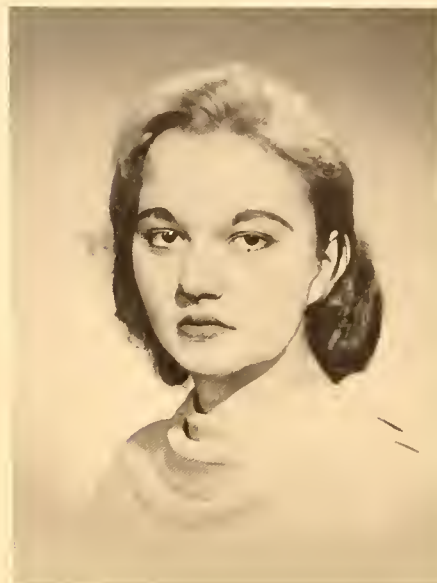
**Ruth Eva Lewis**  
**Nursing**

*Under the serenity, a tendency to  
bubble . . . never-failing tact and  
competence . . . long-term friend.*



**Virginia Audrey Levy**  
**Social Science**

*Combination of charm and sincerity  
in a special way . . . calmness and a  
touch of intensity.*



**Elaine Anne LeBaron**  
**Retailing**

*Briskness of outlook . . . assured  
manner . . . efficiency plus on  
every job.*



**Jean Bernadette Lee**  
**Science**

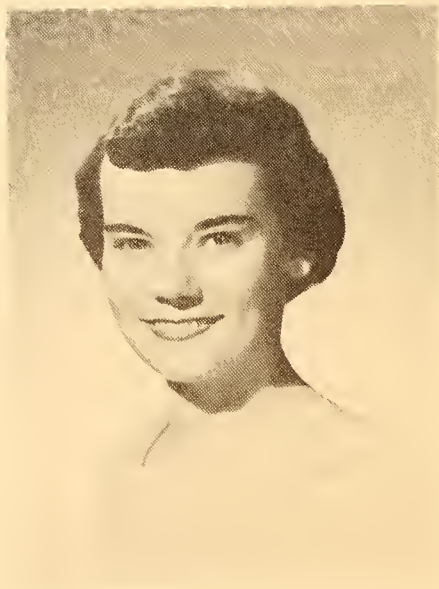
*A petite versatile miss . . . ready with  
a helping hand and a big smile.*





**Barbara Marr Linington**  
**Retailing**

*Fresh and wholesome . . . the gracious personality . . . dancing feet . . . oriented toward fashion . . . mature responsible attitude.*



**Barbara Frances Lloyd**  
**Nursing**

*Versatile musician . . . self-contained and calm throughout the busiest day . . . pleasantly cheerful.*



**Helen Gass Lunger**  
**Business**

*Takes her work seriously . . . good business-woman . . . never raises her voice . . . sincere, pleasant laugh.*



**Roslyn Fish Mateles**  
**Publication**

*Volatile movement . . . talent unlimited . . . posters that are the pride of the school . . . busy.*

**Shirley McNeil**  
**Publication**

*Little Iodine with poise . . . casual efficiency . . . not so high but mighty.*



**Mary Roswell Leavitt**  
**Science**

*Five-foot-two . . . eyes of blue . . . the athletic scientist.*



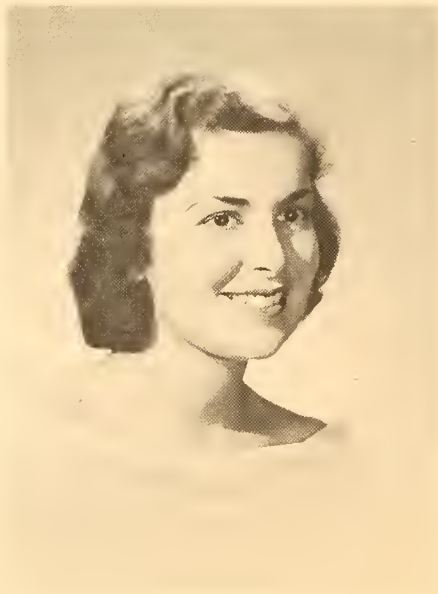
**Sandra MacLean**  
**Social Science**

*Unstudied enthusiasm . . . the unmethodic . . . frequently inspired . . . never do today what can be put off.*



**Muriel Edna Menzies**  
**Nursing**

*Canadian businesswoman . . . now  
New Hampshire's Public Health  
nurse.*



**Marjorie Sandra Melnick**  
**Publication**

*Always feminine . . . classes are in-  
terruptions between travels . . . likeable.*



**Marcela Luisa Messany**  
**Library Science**

*The Latin flavor . . . adept dancer  
. . . serenity . . . fascination of the  
quiet person . . . inquiring student.*

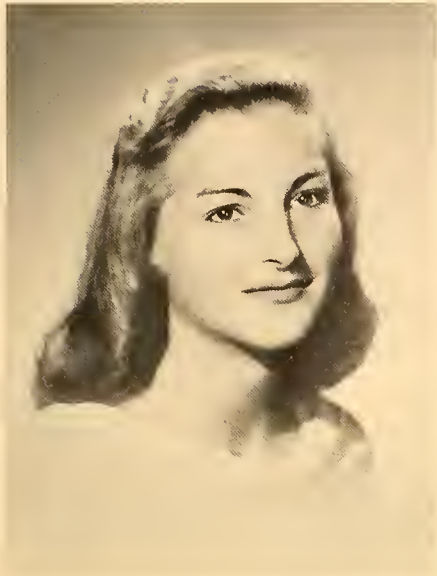


**Barbara Ann Miller**  
**Retailing**

*School spirit and enthusiasm for any  
undertaking . . . All-American look  
. . . scintillating smile.*

**Sandra Hunter Morrison**  
**Business**

*Soft-spoken charm . . . gentlemen prefer blonds . . . unconscious grace and poise.*



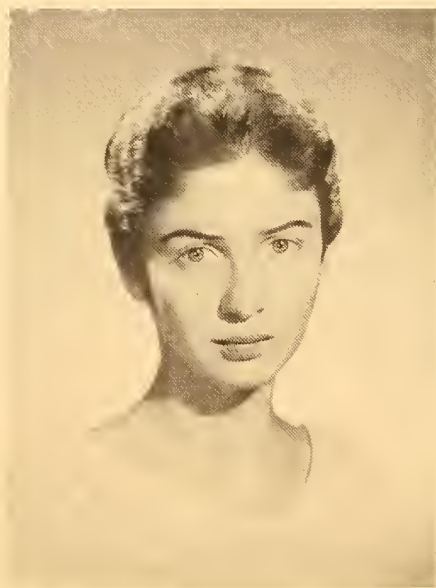
**Josephine Anna Morello**  
**Science**

*An infectious giggle keeps labs alive . . . an educational path beaten from Beacon Hill to the Fenway.*



**Mary Frances Moran**  
**Library Science**

*Blond bon vivant with a taste for antiques . . . a modern girl who likes the simple life.*



**Marilyn Faith Miller**  
**Social Science**

*As pretty as a Romantic novel . . . lively . . . wide-eyed innocence, wise maturity . . . unassuming charm.*

**Helen Ewing Mitchell**  
**Retailing**

*Demure yet funloving . . . a good listener . . . the common-sense approach.*





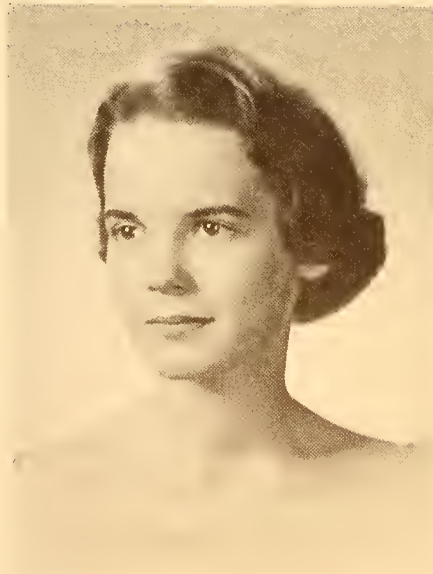
**Anne Barbara Murgia**  
**Retailing**

*Quiet beauty in her smile . . . as gracious and serene as a portrait in any circumstances.*



**Ruth Elizabeth Oja**  
**Nursing**

*Good health and good cheer . . . outgoing and energetic . . . confident and conscientious.*



**Marilyn Susanna Olson**  
**Social Science**

*Keynote: awareness . . . imaginative approach . . . dramatically talented . . . tradition with an eye to the future.*



**Arline Vincent O'Neill**  
**Business**

*Neat and sandy-haired with lots of spunk . . . many good ideas sprout from her.*

**Constance Jane Pennington**  
**Social Science**

*Regal elegance . . . humanitarian endeavors . . . the art of subtle humor.*



**Louise Isola Payne**  
**Business**

*Always doing something . . . many crises conquered . . . friendly and vivacious, shows her liking for people.*



**Madeline Paul**  
**Library Science**

*Sweet and sincere, knows her own mind . . . the right word at the right time.*



**Sheila Ann Orlinsky**  
**Social Science**

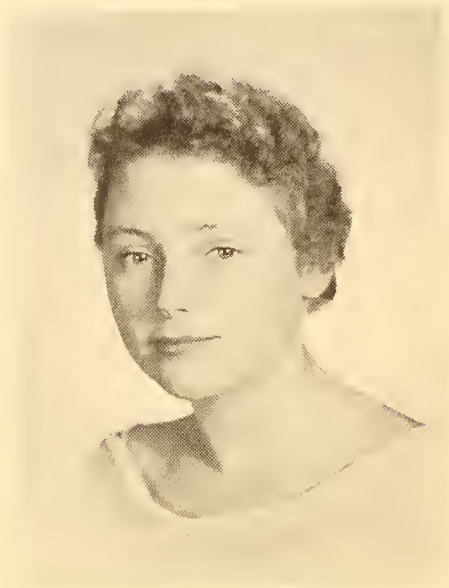
*Teacher smaller than her students . . . reigning with a firm hand . . . no bit of history she doesn't know.*



**Lilly Belle Panella**  
**Home Economics**

*Mischievously flirtatious . . . infinitely capable . . . versatility of the seamstress par excellence and pianistic perfection.*





**Janet Ida Phillips**  
**Business**

*Efficiency . . . good health and good spirit . . . unfailingly helpful with a word for everyone . . . genuine.*



**Joanne Louise Porter**  
**Science**

*Equanimity through excitement . . . generous . . . many-faceted . . . a mellow, resonant quality.*





**Marcia Clara Rhodes**  
**Science**

*With the enviable curl . . . compatibility and loyalty . . . intensity of effort.*



**Victoria Ann Reichert**  
**Science**

*Efficient . . . under the freckles, a warm and understanding nature . . . capacity for understatement.*



**Ann Rees**  
**Nursing**

*Small and excitable . . . only nurse who can walk upright under the hospital beds . . . a loyal, helpful friend.*



**Sheila Judith Porter**  
**Science**

*Glistens with zeal . . . a constant state of panic, blessed with an unlimited supply of warmth.*



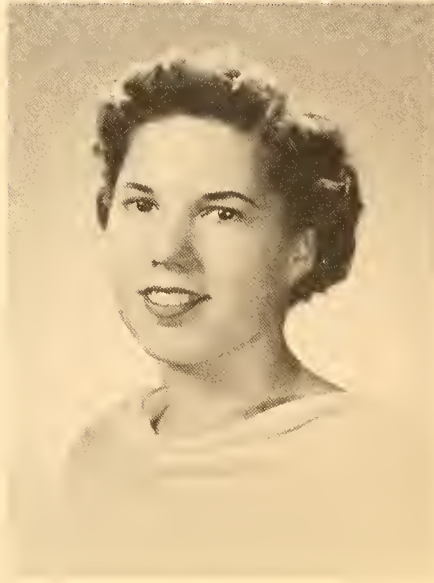
**Jeanne Sibyl Potischman**  
**Home Economics**

*Her goals always clearly in sight . . . helping hand that makes the task lighter.*



**Risa Rickman**  
**Publication**

*Expressive eyes . . . calm force behind the storm . . . inspires the best in everyone . . . volatile, versatile, reassuring.*



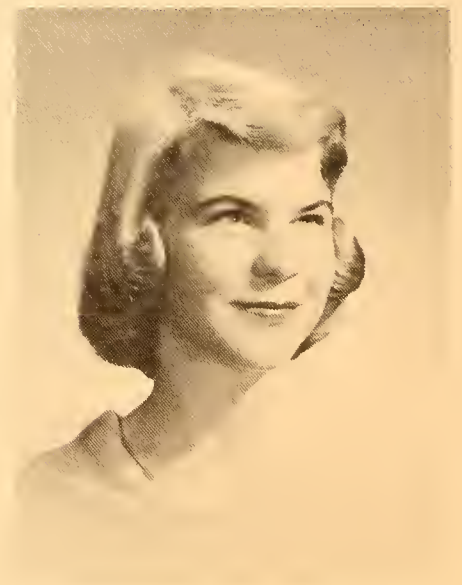
**Marion Faith Rogers**  
**Social Science**

*School enthusiasm undimmed by subway's pressure . . . candid . . . capricious though serious in her goals.*



**Carol Fay Rosenblum**  
**Social Science**

*Sparkling eyes that hypnotize . . . so delightfully herself . . . never a frown . . . a sunny day in April.*



**Marcia Norton Ross**  
**Home Economics**

*Pert and piquant . . . that enviable platinum blond hair and deep dimple.*

**Ann Marie Schmidt**  
**Home Economics**

*Calmly sweet in manner and appearance . . . patient attention to details . . . genuine trust in everyone.*



**Mary Nancy Scandura**  
**Nursing**

*Genuinely sympathetic . . . forever in an uproar . . . can always cheer you up.*



**Patricia Dawn Ryerson**  
**Library Science**

*Shines with an eager good-will . . . from her lips—delightful chatter . . . vitality.*



**Margaret Witton Russell**  
**Publication**

*An intelligent young woman . . . our efficiency expert . . . sincerity and unhurried, unfailing proficiency.*

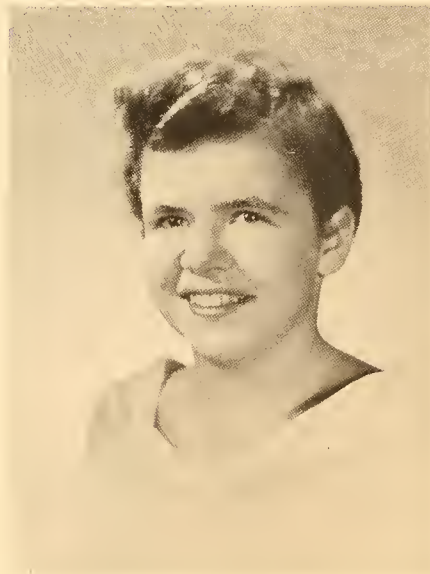
**Beverly Jean Ryd**  
**Library Science**

*Glows with vitality and understanding . . . her presence is felt before she speaks.*



**Gail Edith Scofield**  
**Social Science**

*Easily out-going . . . integral part of every activity . . . talkative and talented . . . gregarious.*



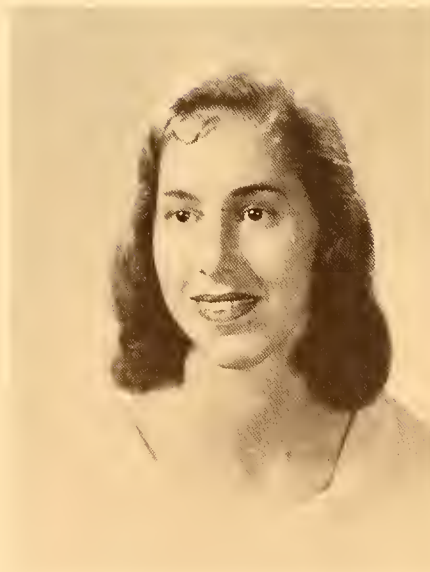
**Betty Louise Sebastian**  
**Nursing**

*Leisurely but potent witicism . . . cheerful and dependable . . . a credit to her profession.*



**Jane Skillman Seymour**  
**Social Science**

*Master of satirical wit . . . unbounded enthusiasms . . . politically oriented . . . effervescent laughter.*



**Judith Ann See**  
**Publication**

*Has the style of an individualist . . . photography and dramatics . . . the active personality.*





**Joan Marjorie Sharrow**  
**Social Science**

*Rich in poise and completeness . . .  
interested and cheerful . . . takes her  
friendships seriously.*



**Janet Marilyn Shapiro**  
**Publication**

*Dualism of sense and sensibility . . .  
member of the literati . . . perceptive  
. . . the tactful touch . . . talent for  
doing things well.*



**Naomi Harper Shaffer**  
**Nursing**

*Her elfish spirits are unquenchable . . .  
gets her work done despite confusions  
and interruptions.*



**Frima Goldman Shapiro**  
**Home Economics**

*Smile that welcomes confidence . . .  
glow of energy . . . a clear head and  
a quick mind.*



**Leslie Jeanne Smith**  
**Nursing**

*Set world's record for fast wheelchair  
pushing . . . laughs at the right thing  
at the right time . . . frank and friendly.*



**Sally Marvin Speir**  
**Retailing**

*Casual grace . . . a knowing silence  
. . . ready smile and cheerful words.*



**Elizabeth Freeman Spencer**  
**Science**

*No job is unimportant . . . positive  
results from an eager mind . . . bril-  
liance in manner.*



**Eva Marie Stern**  
**Social Science**

*The sophisticate . . . ingeniously charming . . . air of the continental . . . a page from Vogue.*

**Carol Seiders Steele**  
**Home Economics**

*Loving the outdoors . . . healthy insistence on athletic well-being . . . sincere.*



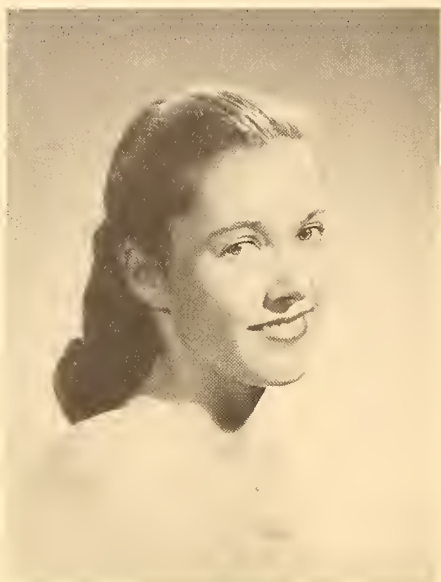
**Paula Lewis Spound**  
**Social Science**

*Young woman with convictions . . . the active personality . . . takes care of the little things . . . a zest for living.*



**Beverly Stearns**  
**Nursing**

*Blithe unconcern . . . a strawberry-blond bundle of confusion . . . jaunty attitude over real sincerity.*



**Stephenie Smith Stewart**  
**Publication**

*Pert and pretty . . . her smile reveals a sparkling personality . . . zest for life.*



**Sarah Jane Stout**  
**Publication**

*Knows how to carry a silence . . . infinite patience . . . a cool, care-less, Nordic beauty.*



**Mary Elizabeth Sughrue**  
**Business**

*Stately as she is charming . . . conscientious . . . sparkle in her eyes reveals a merry spirit.*



**Margaret Finlay Sutton**  
**Nursing**

*M.G.H. graduate to Simmons. Will it be teaching or marriage?*



**Joan Law Walters**  
**Home Economics**

*The bustling home ce-er . . . words aren't words without gestures . . . exhausting energy gets things done.*



**Phyllis Eleanor Turransky**  
**Science**

*Quiescence in looks and manner . . . intelligence personified . . . a traveler with a purpose.*



**Mary Alice Tulloch**  
**Nursing**

*Serene . . . adds dignity unconsciously . . . gives her uniform style and her work competence.*



**Carol Goldmeer Tankel**  
**Business**

*Conscientious . . . reserve and quiet strength are her assets.*

**Lydia Evelyn Thomas**  
**Nursing**

*Registered nurse to traveler . . . study at Simmons and now a master's.*



**Roberta Weisman**  
**Retailing**

*Personification of gentleness and warmth . . . glows with love of life . . . changing moods . . . imp in disguise.*



**Elise Franck Wertheim**  
**Retailing**

*Perky and jaunty . . . a leprechaun's manner . . . fresh outlook . . . gracious attitude.*



**Roberta Frances Wilson**  
**Nursing**

*Overwhelming enthusiasm for her work and life . . . crisp as her uniform and twice as competent.*



**Virginia Ann Williams**  
**Science**

*Good-natured . . . every situation a subject for a story . . . talented mimic.*





**Elaine Louise Woodman**  
**Nursing**

*In perpetual motion . . . on the spot  
when there's help needed . . . red-  
haired hypodermic needle.*



**Judith Anne Wolper**  
**Business**

*A redhead with an even temper . . .  
bubbling with fun . . . lives to music  
. . . cordial.*



**Toby Buchhalter Wintrub**  
**Retailing**

*Her cheerful friendliness and coopera-  
tion made her known, where other  
transfers often get lost.*



**Barbara Gay Witmond**  
**Retailing**

*Cheering words . . . a song and smile  
. . . enthusiasm for every experience  
. . . and every experience an adventure.*

**Virginia Fife Wright**  
**Social Science**

*Essence of a lady . . . contagious grin  
and constant air of fun . . . disorganiz-  
ed organization.*



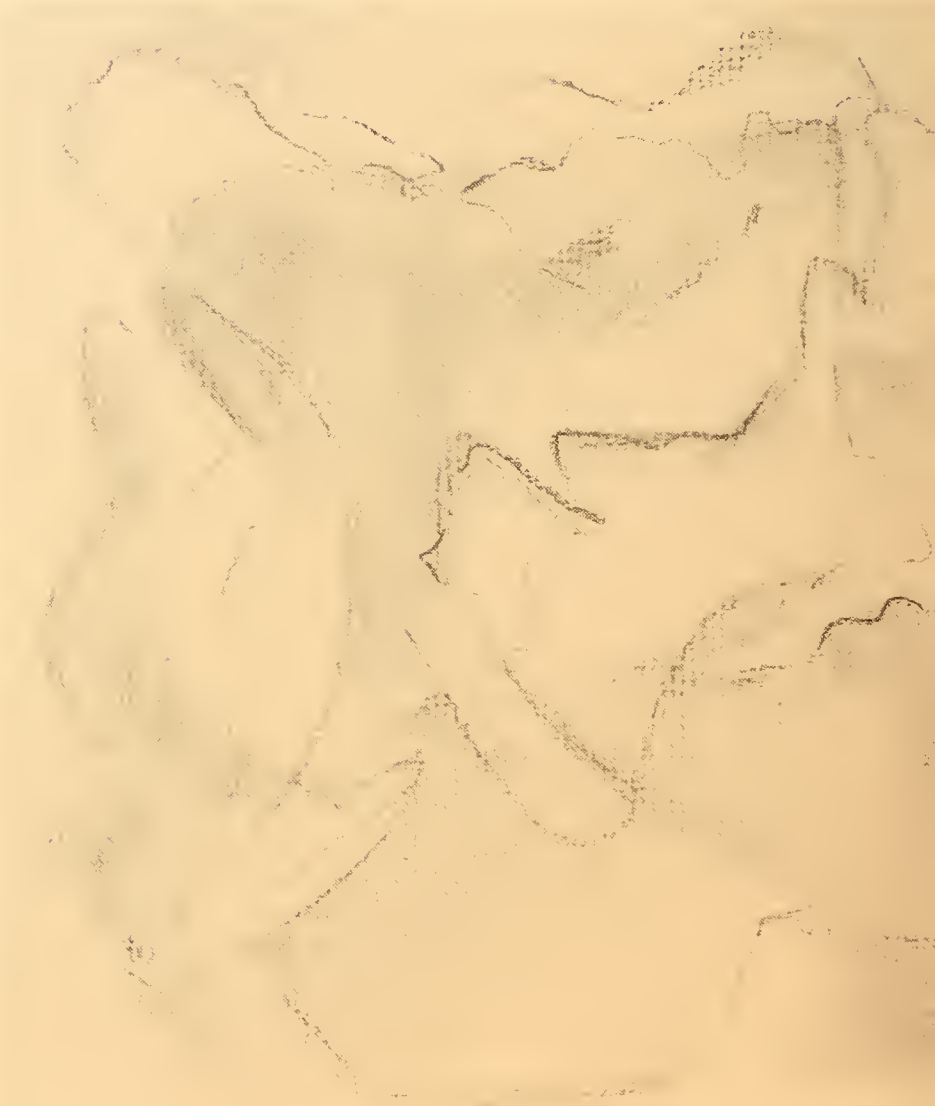
**Anna Louise Wurzbacher**  
**Nursing**

*Business woman . . . to the Navy, on  
to nursing . . . and now Simmons.*



**Marcia Bates Worcester**  
**Nursing**

*Tacit tranquility . . . mercurial yet  
reflective . . . congenial companion . . .  
compliant and easy-going.*





**Joan Clair Zweigbaum**  
**Science**

*Sympathetic ear for all . . . efficiency plus . . . the little girl with all the energy.*

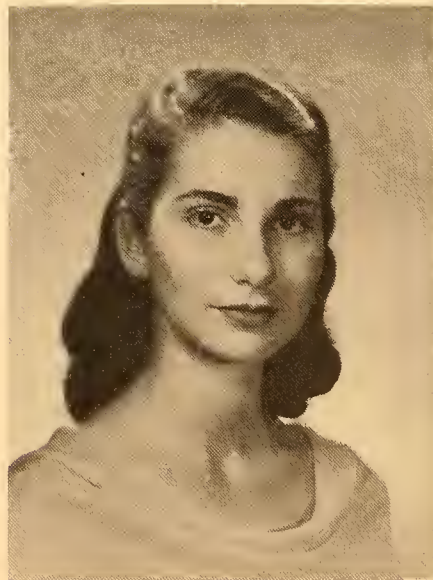


**Barbara Ann Zonis**  
**Library Science**

*Even-tempered . . . woman against the clock . . . warm smile expressing a cheerful personality.*

**Margaret Alice Young**  
**Home Economics**

*The natural look . . . a smile that says friendship . . . calm, cool, and charming.*



**Electra Yankopoulos**  
**Science**

*Model for Praxiteles . . . a study in contrasts . . . to mystify is to fascinate . . . original approach to the ordinary.*

PFM

# STUDENT DIRECTORY

## A

JANE SHERMAN ADAMS, 7 University Avenue, Chatham, New Jersey. Dorm Representative to Social Activities 2; Dorm Treasurer 3; Dorm President 4.

HELEN JEAN ADDISON, 87 Bartlett Avenue, Belmont, Massachusetts. Sock and Buskin 1, 2, 3, 4; Outing Club 1, 2; Christian Association 1, 2, 3; Microcosm Technical Editor 4; Assembly Series 4; Review 4; Class Executive Board 3; Spring Spree Program Chairman 3; Usher President's Installation 3; Olde English Dinner 3, 4; Compets 1, 2, 3.

MARY LEE ADRIANCE, 6 School Street, Andover, Massachusetts. Outing Club 1; Transfer Welcome 3; Anne Strong 2, 3, 4.

ENA ALMULY, 1724 Beacon Street, Brookline, Massachusetts. Hillel 1, 2, 3; YWCA 1; Sophomore Luncheon 2; International Student Center 3; Political Thought and Action 4.

DAWN BLANCHE ANDERSON, Box 95, Port Morris, New Jersey. Class President 1; May Breakfast Chairman 2; Forum Secretary 3; President 4; Academy 3, 4; Review 4.

RUTH CAROLINE ANGELL, 19 Maple Street, Randolph, Vermont. Christian Association 1, 2; Glee Club 1; College Voucher 3; Dorm President 4; Junior Welcome 3; Political Thought and Action 2, 3, President 4; Co-chairman of Announcements and Class Day 4.

MARION SARA APTER, Grennan Road, West Hartford, Connecticut. Political Thought and Action.

BARBARA AUGUST, 525 Sunderland Road, Teaneck, New Jersey. Sock and Buskin 3, 4; Microcosm Publicity Manager 4; Strawberry Breakfast 2; Dorm Social Activities Chairman 4.

CLARA AUGUSTA AUSTIN, 89 East Main Street, Clinton, Connecticut. Prince Club 2, 3, 4.

## B

WENDY BAKER, 155 West 41st Street, Erie, Pennsylvania. Outing Club 1, 2; Anne Strong 2, 3.

MURIEL PHYLLIS BALTIMORE, 62 Henry Avenue, Lynn, Massachusetts. Hillel 1, 2; Ellen Richards 2, 3, 4; Junior Welcome 3; Dorm Council 2; Skit Night Dorm Chairman 2; Secretary-Treasurer of Dorm 2; Freshman-Junior Jamboree 3; Political Thought and Action 2.

DOROTHY BENNETT, 716 Elm Grove Avenue, Providence, Rhode Island. Hillel 1; Social Relations 3, 4; Dorm Secretary 4.

MARY ELIZABETH BENNETT, 3 Richmond Street, Dover, New Hampshire. IVCF 1, 2, 3, Secretary 2; Anne Strong 2, 3.

JUDITH BADGERS BERMAN, 15 Short Street, Brookline, Massachusetts. Hillel 3, 4; Ellen Richards 2, 3, 4; Academy; Microcosm Assistant Circulation Editor 4; Sock and Buskin 1, 2, 3, 4; Junior Welcome 3.

GWENDOLYN JUNE BICKFORD, White Oaks Road, Gilmanton Iron Works, New Hampshire. Ellen Richards 2, 3, 4, Senior Representative 4.

PHYLLIS ROSE BORNSTEIN, 728 Morton Street, Mattapan, Massachusetts. Ellen Richards 2, 3, 4; Hillel 1, 4.

NANCY ELIZABETH BOWKER, R.D. 1, Eliot, Maine. Anne Strong 2, 3, 4.

JOAN REBECCA BRADLEY, 19 Elmhurst Avenue, Waterbury, Connecticut. Newman Club; Graduate Nurses' Club.

JOAN WARING BRADY, 26 Brookside Drive, Cranston, Rhode Island. Honor Board 2; Leaders' Workshop 2; Newman Club 1, 2; House Council 4.

RONNA JO BRICKMAN, 119 Wyman Street, Medford, Massachusetts. Sock and Buskin 1, 2; Hillel 1, 2, 3, 4; Leaders' Workshop 2; Riding Club 1; Junior Welcome 3; Sophomore Valentine Party 2; Political Thought and Action 4; Christmas Cotillion 1, 2.

MARION ANITA BRODY, 611 Mountain Drive, South Orange, New Jersey. Sock and Buskin 3; Hillel 1.

RENEE PHYLLIS BRUCKNER, 330 West 72nd Street, New York, New York. House Council 3; Hillel 1; Spring Spree 3; Skit Night 1,2,3.

PHYLLIS ISENMAN BUCHSBAUM, 118 The Riverway, Boston, Massachusetts. Modern Dance 1, 2, 3, 4.

BARBARA GERTRUDE BUCKLEY, 43 Brookdale Road, Newtonville, Massachusetts. Class Executive Board 1; Class Secretary 2, 3, 4; Honor Board 4; Junior Welcome 3; Newman Club 1, 2, 3, 4.

JOAN ELIZABETH BUCKLEY, 14 Kensington Road, Arlington, Massachusetts. Co-chairman Freshman Prom 1; Honor Board 1, 4; Class President 2; Junior Welcome Steering Committee 3; House Senior 4.

MARJORIE JANE BURRILL, Scotland, Connecticut. Graduate Nurses' Club.

JUDITH ANN BYMAN, 67 Atkins Street, Meriden, Connecticut. Christian Association 1, 2; Ellen Richards 2, 3, 4; Junior Prom 3.

## C

PHYLLIS EDNA CAMERON, 10 Fairview Street, White River Junction, Vermont.

NANCY PATRICIA CARROLL, 28 Parkway Road, Medford, Massachusetts. Newman Club 1, 2, 3, 4; Microcosm Advertising Co-editor 4.

RENEE LYNN CHASALOW, 31 Pine Street, West Orange, New Jersey. Modern Dance Club 1, 2, 3; Physical Therapy Club 1, 2, 3, 4; Spring Spree 3; Sophomore Prom 2; Assistant Fire Chief 4.

EMOGENE ANN CHASE, Pine Plains, New York. Anne Strong 2; House Council 3, 4; Social Relations 4; Leaders' Workshop 4.

FRANCES ADA CHIABRANDY, 3 Morton Avenue, Saugus, Massachusetts. Executive Board 1; Outing Club 1, 2; Spring Spree 2; House Council 3; Transfer Welcome 3; NEWS Treasurer 4; Curriculum Committee 3; Bookstore Committee 4.

SYLVIA ROSITA CHIESA, 64 Charles Street, Dorchester, Massachusetts. Ellen Richards 2, 3, 4; Leaders' Workshop 2, 3; Stu-G Assistant Treasurer 3; Microcosm Business Manager 4.

AUDREY BARBARA CLOPER, 178 Chester Avenue, Chelsea, Massachusetts. Hillel 1, Treasurer 2, 3; Sock and Buskin 2; Sophomore Prom 2; Junior Prom Seating Chairman 3; Junior Welcome 3; Sophomore Luncheon 2.

ARLENE LEVY COHEN, 821 Beacon Street, Boston, Massachusetts. Prince Club 3, 4.

JULIA McMAHON COLLINS, 125 Blue Hills Parkway, Milton, Massachusetts. Newman 1, 2, 3, 4; Home Economics 2, 3, 4; Chairman Sophomore Auction 2; Leaders' Workshop 2; Social Activities Committee 3; Stu-G Chairman of Social Activities 4.

ELLEN ELGART CONOVITZ, 69 Old Pond Road, Great Neck, New York. Transfer from Connecticut College.

SHEILA CONSTANCE CORMACK, Guantanamo Sugar Company, Guantanamo, Oriente, Cuba. Christian Association 1, 2, 3, 4; Fire Proctor 3, 4; Skit Night 1, 3; Food Representative 4.

CONSTANCE FRANCES COSTIGAN, 1106 Del D'or Drive, West Point Pleasant, New Jersey. Skit Night 3; House Senior 4; House Council 4; Social Relations 4; Assistant Art Editor Microcosm 4; Art Editor Review 4.

ANN MARIE COUGHLIN, 52 Dexter Road, Lexington, Massachusetts. Transfer from Lasell Junior College; Newman Club 3, 4; Outing Club 3.

SYLVIA ALLEN COUTTS, 3557 Third Avenue, San Diego, California. Freshman Prom Program Chairman 1; Junior Welcome 3; Spring Spree Parents' Day Chairman 3; Honor Board 3, 4; Class Executive Board 3, 4; Academy 3, 4; Senior Week 4; Review 4.

RUTH GARDNER CRIDER, 10 Shepard Street, Cambridge, Massachusetts. Junior Welcome 3; Athletic Association Riding Chairman 3, 4; Review 4.

JOAN FRANCES CUMMINGS, 99 Cedar Street, Rye, New York. Prince Club 3, 4, Treasurer 3; Spring Spree 3.

JOAN PAULA DALEY, 250 Russett Road, Brookline, Massachusetts. Newman Club 1, 2, 3, 4, Representative to IRCC 3; Glee Club 1, 2; Dorm Council 1; Junior Prom 3; Cap and Gown Chairman 4; Olde English Dinner 4; Dorm Representative to Stu-G 4.

JOAN LOUISE DAMON, 106 Vernon Avenue, South Barre, Massachusetts. Outing Club 1, 2, Treasurer 3; Anne Strong 2, 3; Executive Board 2; Sophomore Luncheon 2; IVCF 3.

JUDITH HANSIS DAVIES, 548 High Street, Medford, Massachusetts. Glee Club 1, Librarian 2; Class Executive Board 4.

JUDITH SANDRA DAVIS, 123 Sutherland Road, Brighton, Massachusetts. Hillel 1, 2, 3, 4; Sock and Buskin 1, 2; Sophomore Luncheon 2; Junior Welcome 3; Social Relations 1, 2, 3, 4; Chairman Freshman-Senior Mixer 4; Assistant Photography Editor Microcosm 4.

PRISCILLA ANN DAVIS, Wells, Maine. Academy 3, Secretary-Treasurer 4.

CONSTANCE MAY DELOREY, 6 Dennison Avenue, Swampscott, Massachusetts. Graduate Nurses' Club.

JOYCE ELIZABETH DeSILVIA, 44 Harrison Street, Taunton, Massachusetts. Junior Welcome 3; Newman Club President 4; Academy 4; Senate 4.

CAROL JOAN DeSTEFANO, 162 Metropolitan Avenue, Roslindale, Massachusetts. Home Economics Club 2, 3, Tea Chairman 4; Executive Board 2, 4; Christian Science Organization 2, 3.

PATRICIA LINGLEY DICKSON, 215 Commonwealth Avenue, Boston, Massachusetts. Prince Club 4.

JULIA ANN DILLON, 378 Grove Street, Melrose, Massachusetts. Physical Therapy Club 2, 3, 4; Modern Dance Club 1, 2, 3; Freshman Prom 1; Sophomore Prom 2; Junior Welcome 3.

MARILYN BARBARA DOLIN, 1503 Meadowbrook Drive, Syracuse, New York. Executive Board 1; Skit Night 3; Academy 3, 4; House President 4; Hillel 1, 2; Review 4.

GAIL ELAINE DONTIGNEY, 298 Broad Street, Meriden, Connecticut. House Senior 4; Dorm Representative to Social Activities 4; Volunteer Work 4; May Breakfast 2.

EVELYN JANE DOWD, 10 Edward Avenue, Milton, Massachusetts. Outing Club 1, 2; Sock and Buskin 1, 2, 3, 4 Treasurer 3; Mimeograph Chairman 3; Microcosm 2; Stu-G Treasurer 4.

YVETTE MARIE DOWLING, 11 Chase Road, Waltham, Massachusetts. Sock and Buskin 1, 2, 3, 4; Newman Club 1, 2, 3, 4.

MARY WILMA DREIER, 543 Lakewood Avenue, Ocean Gate, New Jersey. Transfer from Denison University 2; Modern Dance Club 2, 3; Physical Therapy Club 2, 3; Secretary-Treasurer 3, 4; Chairman Transfer Welcome 3; Co-chairman Junior Prom 3; House Senior 4.

ELIZABETH LEONA DUNCAN, 16 Dufton Court, North Andover, Massachusetts. Ellen Richards 2, 3, 4; Outing Club 3, 4; Junior Representative to Forum 3; Biology Seminar Committee 4.

SYLVIA ANNE DYKE, 648 South Christine Street, Wichita, Kansas. Volunteer Work 2; Spring Spree 3; Christian Association 4; Olde English Dinner 4.

## E

MARGARET DAVIDSON EBERLEIN, Box 162, Newtown, Connecticut. Modern Dance Club 1; Le Cercle Francais 1; Bookstore Committee 1; Leaders' Workshop 2; Assembly Series 2; Vice-President of Dorm 2; Associate Managing Editor of NEWS 2; Stu-G Representative to Review 3; Dorm Representative to Stu-G 3; Academy 3, 4; Vice President of Stu-G 4.

JANE PRENTICE ETTINGER, 16 Overlook Road, Scarsdale, New York. Prince Club 2, 3, 4; Spring Spree 3.

## F

GAIL ENID FALCONER, 451 Bogert Avenue, Ridgewood, New Jersey. Freshman House Chairman 1; YWCA 1; Sock and Buskin 1, Advertising Manager 2; IVCF 1, 2, President 3, 4; Poster Committee 3, 4; IRCC 4; Editorial Assistant of NEWS 4; Simmons Handbook 4; Review 4.

ENID MARILYN FELDMAN, 186 Bainbridge Street, Malden, Massachusetts. Hillel 1, 4; NEWS Reporter 1, 2, 3, Managing Editor 4; Leaders' Workshop 3; Sock and Buskin 1; Review 4.

CONSTANCE LEE FIELDS, 399 Chapman Street, Canton, Massachusetts. Modern Dance Club 1, 3.

NATALIE JEAN FITTS, 804 Main Street, Lynnfield Center, Massachusetts. House President 3; Junior Welcome 3.

PHYLLIS ELAINE FLAHERTY, 51 Fairfield Avenue, South Norwalk, Connecticut. Newman Club 1; Social Relations 2; Entertainment Chairman Sophomore Prom 2; Freshman-Junior Jamboree 3; Spring Spree 3; Dorm President 4; Senate 4; Chairman Senior Dance 4.

SYLVIA ANN FLIGHT, 100 Burgess Avenue, Westwood, Massachusetts. Junior Welcome 3; Executive Board 3, 4; Poster Committee 3, 4; Sock and Buskin 3, 4.

MARTHA WHEATLEY FOSTER, 258 Hollow Tree Ridge Road, Darien, Connecticut. YWCA 2, 3; Fund Drive Committee 3; Christmas Cotillion 3.

SANDRA ELAINE FRANK, 23 Ruskin Street, Providence, Rhode Island. Social Relations 1, 2, 3 President 4; Blazer Chairman 1; Junior Welcome 3; House Council 4; Freshman-Sophomore Valentine Party 2; Hillel 1, 2; Volunteer Work 1, 2, 3, 4; Sophomore Luncheon 2.

MEREDITH EASTER FRAZER, 32 Pleasant Street, Aver, Massachusetts. Glee Club 2; Sock and Buskin 2, 3, 4; NSA 2; House President 3; Skit Night 3; Olde English Dinner 4; Co-chairman of Announcements and Class Day 4.

VIRGINIA KUEHNER FUSICK, 524 Advent Street, Westbury, New York. Graduate Nurses' Club 3, 4; Newman Club 3, 4.

## G

PATRICIA MARGARET GALLANT, 48 Hanscom Avenue, Reading, Massachusetts. Newman Club 1, 2, 3, Treasurer 4; Ellen Richards 2, 3, President 4; Junior Welcome 3; Chairman Food Committee 3.

DOREEN GARDNER, 115 Nichols Street, Everett, Massachusetts. Physical Therapy Club 2, 3, 4; Hillel 1, 2, 3.

NANCY LOUISE GARLAND, Sandwich, Massachusetts. Glee Club 3, President 4.

# STUDENT DIRECTORY

**PATRICIA ANN GAUGHAN**, 119 Chestnut Street, Needham, Massachusetts. Newman Club 1, 2, 3, 4; Home Economics Club 2; Junior Welcome 3.

**ELAINE ANNE GAYSUNAS**, 15 Williams Street, Newton Upper Falls, Massachusetts. Transfer from Lasell Junior College; Spring Spree 3; Newman Club 3, 4; Circulation Manager of Microcosm 4; Sock and Buskin 4.

**LYNNE JANICE GOLDINGER**, 211 West 35th Street, Wilmington, Delaware. Outing Club 1, 2; Hillel 1, 2, 3 President 2; NEWS Reporter 1, 2, 3 Editor 4; Stu-G Council 4; Review 4.

**IRMA JOY GOLDMAN**, 69 Ballard Drive, West Hartford, Connecticut. Sophomore Prom 2; Publicity-Decorations Chairman of Spring Spree 3; MC Skit Night 3, 4; Assistant Business Manager and Executive Secretary of Microcosm 4.

**KATHLEEN VETROMILE GONSALVES**, 52 Woodward Street, Everett, Massachusetts. Sock and Buskin 2, 3; Newman Club 2, 3; Poster Committee 3.

**JUNE JOHNSON GONZALEZ**, 8 y 19, Vedado, Havana, Cuba. Executive Board 2; Leaders' Workshop 2; NSA 3, Chairman International Affairs Commission; Stu-G 4, Chairman of Workshop and NSA.

**BARBARA LETHA LOIS GOODELL**, Sea Street, East Dennis, Massachusetts. Transfer from Pennsylvania College for Women; Chairman of Tea, Transfer Welcome 3; Outing Club 3, President 4; Music Listening Committee Chairman 3, 4.

**SANDRA MALVER GOODMAN**, 309 West Mall Place, Glendale, Wisconsin. Transfer from Smith College 3; Physical Therapy Club 3, 4; Academy 4.

**PRISCILLA STEPHANNE GREENE**, 1875 Commonwealth Avenue, Brighton, Massachusetts. Ellen Richards Club 2, 3, 4.

**LOIS RITA GREENSPAN**, 154 Kearny Avenue, Perth Amboy, New Jersey. NEWS 2; Junior Welcome 3; Dorm Treasurer 4.

**JEANNETTE ELIZABETH GRISE**, 873 Chestnut Street, Waban, Massachusetts. Ellen Richards 2, 3, 4; Academy 3, 4; Newman Club 1, 4.

**LILLIAN MAVIS GUERNEY**, Vernon Street, Bethel, Maine. Christian Association 1, 2; House Senior 4; Spring Spree 1, 2; President's Installation 3; Social Relations 1, 2, 3, 4; Skit Night 1, 3; House Council 3, 4.

**EMILIE ANNE GUSTAFSON**, 155 George Street, Arlington, Massachusetts. IVCF 1, 2, Treasurer 3; Glee Club 2, Secretary 3; Anne Strong 2, 3; Paramount Uniform Award 2; Junior Welcome 3; Basketball 3.

**GENEVIEVE MARY GUZIK**, 250 Bronxville Road, Bronxville, New York. Newman Club 1, 2, Program Chairman 3, Secretary 4; Outing Club 2; Prince Club 2, 3, 4; Junior Welcome 3; Executive Board 3; Social Activities Dorm Representative 3, Campus Chairman 4; President's Installation 3; Sophomore Luncheon 2; Jazz Concert Co-chairman 3; Spring Spree Dance Co-chairman 3; House Presidents' Council.

**NATALIE MARIANNE HADDAD**, 144 Jackson Street, Willimantic, Connecticut. Ellen Richards 2, 3, 4; Freshman Handbook 2; Spring Spree 3; Student Invitation Days Refreshment Chairman 3; Bookstore Committee 4; Constitution Committee 4; Fund Drive Committee 3.

**LOUISE HELENA HARIAN**, 16 Little Pond Road, Belmont, Massachusetts. Outing Club 1; Sock and Buskin 1, 2, 3, 4; Junior Welcome 3; Leaders' Workshop 2; Advertising Manager Microcosm 4.

**BARBARA FRANCES HARJU**, Factory Street, Sandwich, Massachusetts. Transfer from University of New Hampshire; Secretary to House Presidents' Council 4.

**JOYCE HARVEY**, 802 Blue Hill Avenue, Dorchester, Massachusetts. Modern Dance 2, 3; Usher at Competes 2; Sophomore Luncheon 2.

**AUDREY NIELSEN HAUGAARD**, 31 Austin Street, Portland, Maine. Glee Club 1, 2, 3; Class Vice President 1, 2; Class President 3; Physical Therapy Club 2, 3, President 4; Junior Welcome 3.

**MAYBELLE ANN HAUSER**, 107 Waverly Street, Everett, Massachusetts. Assembly Series 4; Transfer Welcome 3; Sock and Buskin 1, 2, 3, Treasurer 4.

**MARY MARGARET HENDERSON**, 225 Main Street, North Easton, Massachusetts. House President 3; Senate Moderator 4; Olde English Dinner 4; Junior-Freshman Jamboree 3; Rule Book Committee 3.

**ARDEN KNIGHT HERTZOG**, 242 North Van Dien Avenue, Ridgewood, New Jersey. Christian Science Organization 1, 2, President 3, Secretary-Treasurer 4; House Senior 4; Freshman-Junior Jamboree 3; Senator 4; Home Economics Club 1, 2, 3, 4; YWCA 1, 2, Secretary-Treasurer 3.

**NANCY ANN HODGKINS**, 72 Machigonne Street, Portland, Maine. Newman Club 1, Treasurer 2; Athletic Association Representative 1, Secretary 2, Vice President 3; House Senior 4.

**MURIEL CASHELL HOLUB**, 1 Peterborough Street, Boston, Massachusetts. Modern Dance Club 2, 3; Physical Therapy Club 2, 3, 4; Junior Prom 3.

**DONNA HOWLAND**, 156 Academy Street, Braintree, Massachusetts. Bluettes 1, 2, 3, 4; Executive Board 3; Dorm Social Activities Chairman 3; House Senior 4; Olde English Dinner 4; Dorm Representative to Social Activities 4.

**MURIEL MARY HUBBARD**, 9 Ware Street, Cambridge, Massachusetts. Graduate Nurses' Club; Glee Club.

**CONSTANCE MOORE HUGHES**, 64 Gorham Street, Cambridge, Massachusetts. Graduate Nurses' Club.

**CAROLE HAYES JAQUES**, 48 Walden Street, Concord, Massachusetts. Newman Club 1, 2, 3, 4; Sock and Buskin 1, 2, 3; Junior Welcome Steering Committee 3; NEWS 3; Spring Spree Treasurer 3; Class Treasurer 2, 3, 4; Senate 4; Business Manager Senior Week 4; Olde English Dinner 4.

**LILLI SVEA JOHANSON**, Jaffrey, New Hampshire. Graduate Nurses' Club.

**ILENE EDELSTEIN JOHNSON**, 27 Lanark Road, Brookline, Massachusetts. Hillel 1, 2; Modern Dance 1, 2 President 3; Review 4.

**PENELOPE SEVESTE KARAGEORGE**, 141 Chambers Street, Newburgh, New York. Orthodox Club 1, 2, 3, President 4; Vice President of Forum 3; Forum Representative 4; Chairman Freshman-Sophomore Party 2; Dorm Secretary 3; Assistant Literary Editor Microcosm 4; Competes 2; Review 4.

**INA LEE KARELITZ**, 198 Lafayette Street, Salem, Massachusetts. Hillel 1. NEWS 1. Circulation Manager 2, 3, Business Manager 4; Junior Welcome 3; Stu-G Workshop 4.

**SANDRA PATKIN KARP**, 58 Beltran Street, Malden, Massachusetts. Hillel.

**SANDRA MIRIAM KAUFMAN**, 199 Strathmore Road, Brighton, Massachusetts.

**LORRAINE JO-AN KECHEJIAN**, 4 Grant Avenue, Belmont, Massachusetts. Sock and Buskin 1, 2; Sophomore Luncheon 2; Newman Club 1, 2, 3, 4; NEWS 2; Assembly Series 3; Executive Board 3, 4; Senate 4.

**ELIZABETH KEITH**, 168 Grove Street, Putnam, Connecticut. Graduate Nurses' Club Secretary.

**BARBARA ANN KELLEY**, 99 Byner Street, Jamaica Plain, Massachusetts. Ellen Richards 2, 3, 4; Outing Club 1; Newman Club 1,2,3,4.

**KAY ROBINSON KENNARD**, 190 Topsfield Road, Wenham, Massachusetts. Christian Association 1; Sock and Buskin 1; Competes 1; Sophomore Luncheon 2; Sophomore Auction 2; Fire Proctor 2; Food Representative 3; Prince Club 3, 4.

**JOAN FRANCES KENNEY**, 83 Virginia Road, Concord, Massachusetts. Newman Club 1, 2, 3, 4; Clee Club 1, 2; Volunteer Service 2; Sophomore Auction 2; Leaders' Workshop 2; Outing Club 2; NEWS 2, 3, 4; Spring Spree 1, 2, 3; Microcosm 4; Prince Club 2, 3, Social Activities Chairman 4; Skit Night 1, 3.

**JOAN ANN KETTNER, R.F.D. 1, Hyannis, Massachusetts.**  
**SHIRLEY ANNE KIMBER**, 80 Lawton Road, Needham, Massachusetts. Ellen Richards Club 2, 3, Secretary-Treasurer 4; Outing Club 3; Commuter Representative to Social Activities Committee 4.

**MARY EVELYN KING**, 728 Irving Place, Plainfield, New Jersey. Newman Club 1, 2, 3, 4; Executive Board 2; House President 3; Junior Welcome 3; House Senior 4; Olde English Dinner 4; Student Health Committee 4; Faculty Committee on Student Affairs 4; Review 4; Art Editor 4. Assistant Art Editor Microcosm.

**MARCIA JOAN KOVARA**, 54 Forest Road, Tenafly, New Jersey. Transfer from Colby Junior College; Transfer Welcome 3; Sock and Buskin 2, Vice President 3, 4; NEWS 3, Technical Editor 4; Review 4.  
**NANCY ADELAIDE KRATZSCH**, 246 Purchase Street, Milford, Massachusetts. Student Officers' Day 2; Sock and Buskin 3, Secretary 4. Poster Committee 2.

**ELAINE KRAUSS**, 152 Bard Avenue, Staten Island, New York. Junior Welcome 3; Political Thought and Action President 3, 4.

**ROSANNE OLIVIA KUNZE**, 86 School Street, Needham, Massachusetts. Leaders' Workshop 2; Newman Club 2, 3, 4; Modern Dance Club 3; Olde English Dinner Seating Chairman 4.

**PAULA BLOOMFIELD LANDAU**, 370 Longwood Avenue, Boston, Massachusetts. Hillel 1; Skit Night 3; Social Activities Representative 1; Co-chairman of Freshman-Junior Bib Party 3; Sophomore Prom 2; Spring Spree 3; Freshman-Junior Jamboree 3.

**RUTH ALLEN LANE**, 40 Parkwood Street, Springfield, Massachusetts. Anne Strong Club 2; Class Executive Board 4; Literary Editor of Microcosm 4; Review 4.

**JUDITH WARREN LAZZARA**, 131 Summer Street, Stoneham, Massachusetts. Christian Association 2, 3; Junior Welcome Steering Committee 3; Leaders' Workshop 2.

**MARY ROSWELL LEAVITT**, 1 Westview Terrace, Natick, Massachusetts. Ellen Richards 2, 3, 4; Athletic Association 3.

**ELAINE ANNE LeBARON**, 56 South Street, Foxboro, Massachusetts. Sophomore Prom 2; Volunteer Work 2; Christian Association 3; Christmas Cotillion 3; House Council 4; Skit Night 3; President's Installation 3; Prince Club 2, 3, 4.

**JEAN BERNADETTE LEE**, 17 Upland Road, Cambridge, Massachusetts. Newman Club 1, 2, 3, 4; Ellen Richards 2, 3, 4; Junior Welcome 3; Academy 3, 4. Program Chairman; Executive Board 4.

**VIRGINIA AUDREY LEVY**, 563 Washington Street, Brookline, Massachusetts.

**RUTH EVA LEWIS**, 79 Jordan Drive, Hampton, Virginia. Anne Strong 2, 3.

**LUCINDA ANNE LIKINS**, 172 Lincoln Street, Melrose, Massachusetts. Prince Club 3, 4; May Day Breakfast 3.

**BARBARA MARR LININGTON**, 818 Fourth Avenue, N.W., Minot, North Dakota. Outing Club 2, 3, 4; Prince Club 2, 3, 4; Junior Welcome 3; Class Executive Board 3, 4; Dorm Social Activities Chairman 3; House President 4; Senate 4; Co-chairman Student Invitation Days 3; Co-chairman Acquaintance Dance 3; Junior Prom 3; Christmas Cotillion 4.

**BARBARA FRANCES LLOYD**, 35 Spruce Street, Westerly, Rhode Island. Clee Club 1, 2, 3; Junior Welcome 3; Co-chairman Student Invitation Days 2; Honor Board 3; Bluettes 2, Leader 3.

**HELEN GASS LUNGER**, 639 Arlington Avenue, Westfield, New Jersey. Clee Club 1, 2, 3; Bluettes 3, Leader 4; Executive Board 3; Song Leader 4; Business Manager Junior Prom 3; Transfer Welcome 3; Honor Board Secretary 4.

**SANDRA MacLEAN**, 1595 Massachusetts Avenue, Cambridge, Massachusetts. Clee Club 1, 2; Bluettes 2, 3; Leaders' Workshop 2, Commission Chairman 3; Junior Welcome Steering Committee 3; Executive Board 2, 3; Song Leader 3; Stu-G Assistant Vice President 4.  
**JANE DORIE McDONALD**, 12 North Carver Street, Warren, Pennsylvania. Graduate Nurses' Club.

**SHIRLEY McNEIL**, 25 North Quaker Lane, West Hartford, Connecticut. Junior Welcome Steering Committee 3; Dorm Vice President 3; Dorm President 4; Spring Spree Program Chairman 3; Freshman-Sophomore Valentine Party 2; Volunteer Service 2; Review 4.

**SHEILA MARIE McKIVERGAN**, 244 Pleasant Street, Providence, Rhode Island.

**ROSLYN FISH MATELES**, 501 Beacon Street, Boston, Massachusetts. Poster Committee 1, 2, Chairman 3, 4; Hillel 1, Publicity Chairman 2, 3, President 4; Junior Prom 3; Microcosm Assistant Art Editor 4; Review 4.

**MARJORIE SANDRA MELNICK**, 395 Broadway, Cambridge, Massachusetts. Hillel 1, 2, 3, 4; Sock and Buskin 1, 2; NEWS 3; Volunteer Work 2; Christmas Cotillion 1, 2; Associate Editor Microcosm 4; Review 4.

**MURIEL EDNA MENZIES**, 85 Walnut Street, Manchester, New Hampshire. Graduate Nurses' Club.

**MARCELA LUISA MESSANY**, 1057 LL. Jones, Santiago, Chile. Academy 3, 4.  
**BARBARA ANN MILLER**, R. R. 2, Sheboygan Falls, Wisconsin. Prince Club 2, 3 President 4; Newman Club 1, 2, 3, 4. Treasurer 3; Co-chairman Spring Spree 3; Chairman Tickets Christmas Cotillion 3; Leaders' Workshop 2; Sophomore Auction 2; Co-chairman Student Invitation Days 2; Junior Prom 3; Fire Captain 3; Class Vice President 4.

**MARILYN FAITH MILLER**, 2775 Morris Avenue, Bronx, New York. Glee Club 1; Sock and Buskin 1, 2, 3, President 4.

# STUDENT DIRECTORY

HELEN EWING MITCHELL, 112 Mill Lane, Mountainside, New Jersey. Prince Club 2, 3, 4; Christian Association 1, 2, 3, 4; Skit Night 1, 3; Fire Captain 1, 3.

MARY FRANCES MORAN, 26 Greenway South, Albany, New York. Volunteer Work 2; Library Committee Chairman 4.

JOSEPHINE ANNA MORELLO, 110 Chambers Street, Boston, Massachusetts. Le Cercle Francais 1; Newman Club 1, 2, 3, 4; Ellen Richards 2, 3, 4; Transfer Welcome 3; Representative to the New England Biological Conference 3.

SANDRA HUNTER MORRISON, 144 Wellsville Street, Bolivar, New York.

ANNE BARBARA MURGIA, 315 Prospect Street, Lawrence, Massachusetts. Transfer from Emerson College; Prince Club 3, 4; Newman Club 3, 4.

## O

RUTH ELIZABETH OJA, Pine Hedges, Chesham, New Hampshire. IVCF 1, Vice President 2, 3; Anne Strong 2, 3, 4; Transfer Welcome Graduate Committee Chairman 3; Poster Row Chairman 3.

MARILYN SUSANNA OLSON, 2235 Overlook Road, Cleveland Heights, Ohio. Sock and Buskin 1, 2, 3, 4; House Senior 4; Compets Director 4.

ARLINE VINCENT O'NEILL, 17 Devereaux Street, Arlington, Massachusetts. Newman Club 1, 2, 3, 4; Executive Board 4.

SHEILA ANN ORLINSKY, 150 Floyd Street, Belleville, New Jersey. Hillel 1; Social Relations 2, 3, 4; Junior Welcome 3; Microcosm 4; Spring Spree 2, 3; Strawberry Breakfast 2.

## P

LILLY BELLE PANELLA, 101 Diana Drive, Poland, Ohio. Stu-G Assistant Treasurer 4; Home Economics Club 2, 3, 4; YWCA 1, 2, President 3; Spring Spree 3; Junior Welcome 3.

BEVERLEY BICKUM PARSONS, 275 Lexington Street, Auburndale, Massachusetts. Ellen Richards. Glee Club.

MADELINE PAUL, 1902 Beacon Street, Brookline, Massachusetts. Outing Club 1; Junior Welcome 3; Hillel 4.

LOUISE ISOLA PAYNE, 67 Hadley Road, South Burlington, Vermont. Sock and Buskin 1, 2, 3, 4; Sophomore Luncheon 2; Junior Welcome 3; Refreshments and Decorations Chairman, Student Invitation Days 3.

CONSTANCE JANE PENNINGTON, 10 High Street, Houlton, Maine. Executive Board 1; Sock and Buskin 1, 2, 3; NEWS 1; Volunteer Work Chairman 3; Social Relations Chairman 4; Academy 3, 4; Washington Semester 4.

JANET IDA PHILLIPS, 61 Mitchell Street, Groton, Connecticut. NEWS 1, 2; Dorm Council 1, 2, 3; Sock and Buskin 1; Executive Board 2; Honor Board 3, Chairman 4; Class Vice President 3; Junior Welcome Steering Committee 3; Co-chairman President's Installation 3; Advertising Manager Freshman Handbook 3.

HELENA CATHERINE POIRIER, 91 Mason Street, Salem, Massachusetts. Graduate Nurses' Club.

JOANNE LOUISE PORTER, 308 Third Street, Hackensack, New Jersey. Ellen Richards 2, 3, 4; Modern Dance 1; Fund Drive Chairman 3; Constitution Committee 4; Class Executive Board 1, 2, 3; Leaders' Workshop 2.

SHEILA JUDITH PORTER, 11 Cherry Street, Salem, Massachusetts. Physical Therapy Club 1, 2; Hillel 1, 2, 3, 4, Vice President 3; Junior Welcome 3.

JEANNE SIBYL POTISCHMAN, 7 Red Rock Street, Lynn, Massachusetts. Home Economics Club 2, 3, 4; Volunteer Work 2; Bordon Award.

## R

ANN REES, 15 Shepley Street, Auburn, Maine. Anne Strong 2, 3, 4; Junior Prom 3; Spring Spree 3; Junior Welcome 3.

VICTORIA ANN REICHERT, 46 Clark Street, Dedham, Massachusetts. Physical Therapy Club 2, 3, 4; House Senior 4.

MARCIA CLARA RHODES, 35 Florence Street, Taunton, Massachusetts. Ellen Richards 2, 3, 4.

RISA RICKMAN, 811 Main Street, Torrington, Connecticut. Academy 4; Microcosm 3, Co-editor 4; Spring Spree Co-chairman 3; Dorm Council 2, Social Activities Chairman 3; Dorm Co-chairman of Skit Night 1, 2, 3, 4; Review 4.

MARION FAITH ROGERS, 8 Spring Street, Lexington, Massachusetts. Newman Club 1, 2, 3, 4; Le Cercle Francais 1; Transfer Welcome 3.

CAROL FAY ROSENBLUM, 916 Woodlawn Road, Steubenville, Ohio. Social Relations 2; House Senior 4; Spring Spree 3; Transfer Welcome 3.

MARCIA NORTON ROSS, Starbucks Neck, Edgartown, Martha's Vineyard Island, Massachusetts.

MARGARET WITTON RUSSELL, 96 Margin Street, West Newton, Massachusetts. Commuter Representative to Social Activities 2; Leaders' Workshop 2; Co-editor Freshman Handbook 3; Junior Welcome Steering Committee 3; Representative to Faculty Committee on Students and Student Affairs 3; Class Executive Board 2, 4; Commuter Representative Stu-G 4; Review 4.

BEVERLY JEAN RYD, 197 Mystic Valley Parkway, Winchester, Massachusetts. IVCF 1, 2, 3, 4; Executive Board 2; Library Committee 2; House Senior 4; Transfer Welcome 3.

PATRICIA DAWN RYERSON, 44 Leonard Street, Portland, Maine. Christian Association 3, 4; Compets 3.

## S

MARY ANN SACZYK, 77 Bonner Street, Hartford, Connecticut. Graduate Nurses' Club.

KATHRYN MARY SAWYER, 57 Chestnut Street, Dedham, Massachusetts. Academy.

MARY NANCY SCANDURA, 175 Prospect Street, Lawrence, Massachusetts. Anne Strong 2, Vice President 3, 4; May Day Court 3; Executive Board 3; Skit Night 1, 2, 3; Sophomore Prom Co-chairman 2; Newman Club 1, 2, 3; Clee Club 1, 2; Spring Spree 3.

ANN MARIE SCHMIDT, 48 Church Street, West Roxbury, Massachusetts. Home Economics Club 2, 3, 4, Treasurer 4; Newman Club 1, 2, 3, 4, Senior Representative 4; Chairman Olde English Dinner 4; Fashion Show Chairman Student Invitation Days 3; Sophomore Luncheon 2; Sophomore Auction 2.

GAIL EDITH SCOFIELD, Billington Road, East Aurora, New York. Transfer from St. Lawrence University; Social Relations 3, 4; Policy Committee 3; Sock and Buskin 3; House Senior 4; N.S.A. Representative 4.

BETTY LOUISE SEBASTIAN, R.F.D. 3, Norwich, Connecticut. IVCF 2, 3; Anne Strong 2, 3, 4.

JUDITH ANN SEE, Eastwood Road, Woodmere, Long Island, New York. Transfer from University of Minnesota; Sock and Buskin 2, 3, 4; Microcosm Photography Editor 4; Compets Director 4; Transfer Welcome 3; NEWS 3; Review 4.

JANE SKILLMAN SEYMOUR, 315 Dickinson Avenue, Swarthmore, Pennsylvania. Political Thought and Action; Social Relations; Curriculum Committee 3.

NAOMI HARPER SHAFFER, 120 Main Street, Winchester, Massachusetts. Transfer from Colby Junior College 2; Anne Strong 2, 3, 4; Publicity Chairman 2; Volunteer Work 3.

FRIMA GOLDMAN SHAPIRO, 487 Main Street, Lewiston, Maine. Home Economics Club 2, 3, 4; NEWS 2; Hillel 1.

JANET MARILYN SHAPIRO, 35 Malden Street, Everett, Massachusetts. Class Executive Board 1, 2; Sock and Buskin 1, 2, President 3; Compets 1, 2, 3; Hillel 1, 2, 3; Forum Executive Board 2; NEWS 1, 2, 3; Junior Welcome Steering Committee 3; Freshman Handbook Co-editor 3; Academy 3, 4, Publicity Chairman 3; Policy Committee 2, Advisor 3; Microcosm 3, Co-editor 4; Review 4.

JOAN MARJORIE SHARROW, 130 Garland Road, Newton Centre, Massachusetts. Transfer from Barnard College; Social Relations 3, 4; Forum 3.

LESLIE JEANNE SMITH, 275 Angell Street, Providence, Rhode Island. Newman Club 1, 2, 3; Anne Strong 2, 3, 4.

SALLY MARVIN SPEIR, 225 South Division Street, Cashmere, Washington. Transfer from Stanford University 2; Spring Spree 2; Co-chairman of Afternoon Program, Student Invitation Day 3; Prince Club 3, 4; House Senior 4; Social Relations 4.

ELIZABETH FREEMAN SPENCER, 1356 Clifton Park Road, Schenectady, New York. Class President 4; Dorm President 3; Chairman Small House Council 3; Co-chairman Freshman-Junior Bib Party 3; Junior Welcome Steering Committee 3; Ellen Richards 3; Academy 3, 4; Bluettes 2, 3, 4.

PAULA LEWIS SPOUND, 418 Lovell Street, Worcester, Massachusetts. NSA Representative 1; Dorm Treasurer 2, 3; Junior Welcome Steering Committee 3; Senator 4.

BEVERLY STEARNS, North Conway, New Hampshire. Anne Strong 2, 3.

CAROL SEIDERS STEELE, 50 Fordham Drive, Buffalo, New York. Outing Club 1, 2, 3, Vice President 4; Riding Club 1, 2, 3; Home Economics Club 2, 3, 4.

EVA MARIE STERN, 3 Kensington Street, Andover, Massachusetts. Hillel 1; Sophomore Prom 2; Spring Spree 3; Junior Welcome 3; Dorm Vice President 4; Dorm Social Activities Chairman 2.

STEPHENIE SMITH STEWART, 5 Morrison Avenue, Wakefield, Massachusetts. Freshman Prom 1; NSA 2; May Day 2; Junior Welcome 3; Leaders' Workshop 2; Senate 4; Review 4.

SARAH JANE STOUT, Lowell, Ohio. Freshman-Junior Jamboree 3; Olde English Dinner 4; Art Editor Microcosm 4; Review 4; Assistant Fire Captain.

MARY ELIZABETH SUGHRUE, 484 Brook Road, Milton, Massachusetts. Newman Club 1, 2, 3, 4; Co-chairman Sophomore Luncheon 2; Co-chairman Freshman Register 2; Junior Welcome 3; Athletic Association Treasurer 3; Junior Prom 3; Stu-G Secretary 4; Co-chairman Senior Week 4.

MARGARET FINLAY SUTTON, Orleans, Massachusetts. Graduate Nurses' Club.

## T

CAROL GOLDMEER TANKEL, 50 Naples Road, Brookline, Massachusetts. Volunteer Work 1; Hillel 1; Glee Club 2; Spring Spree 2, 3.

LYDIA EVELYN THOMAS, 20701 Brantley Road, Shaker Heights, Ohio. Graduate Nurses' Club Treasurer 3.

MARY ALICE TULLOCH, South Bethlehem, New York. Glee Club 1; Spring Spree 1; Anne Strong 2, President 3; Co-chairman Junior Prom 3; ICC 3.

BEATRICE LEEPER TURNER, Trenton, Missouri. Home Economics Club.

PHYLLIS ELEANOR TURRANSKY, 75 Georgia Street, Roxbury, Massachusetts. Hillel 1, 2.

## W

JOAN LAW WALTERS, 101 Parsons Street, Wallingford, Connecticut. Outing Club 1, 2; Home Economics Club 2, Vice President 3, President 4; Head Usher President's Installation 3; Junior Prom 3; Co-chairman Senior Week 4.

ROBERTA WEISMAN, 17 Atherton Circle, Lynnfield Centre, Massachusetts. Hillel 1, 2, 3; Prince Club 3, 4; Sock and Buskin 1, 2, 3, Costume Chairman 1, 2.

ELISE FRANCK WERTHEIM, 2 Sheridan Road, Scarsdale, New York. Prince Club 3, 4, Secretary 3.

VIRGINIA ANN WILLIAMS, 116 Lindsev Street, Attleboro, Massachusetts. Ellen Richards 2, 3, 4; Junior Welcome 3.

ROBERTA FRANCES WILSON, 18 Grandview Road, Chelmsford, Massachusetts. Song Leader 1, 2; Junior Welcome 3; Anne Strong 2, 3, 4.

TOBY BUCHHALTER WINTRUB, 135 Washington Street, Brighton, Massachusetts. Transfer from Ohio State 3; Prince Club 3, 4.

BARBARA GAY WITMONDT, 906 River Road, Teaneck, New Jersey. Hillel 1; Prince Club 2, 3, 4; Food Committee 3; Spring Spree 3; Sophomore Prom 2.

JUDITH ANNE WOLPER, 56 Cook Avenue, Chelsea, Massachusetts. Sock and Buskin 1, 2; Le Cercle Francais 1; Forum 2; Hillel 2, President 3; IRCC 3.

ELAINE LOUISE WOODMAN, 24 Kenwood Street, Portland, Maine. Anne Strong 2, Secretary 3, 4; Junior Prom 3; Spring Spree 1.

MARCIA BATES WORCESTER, 205 Putnam Street, Waltham, Massachusetts. Anne Strong 2, 3, 4; Social Relations 3; Junior Welcome 3; Sock and Buskin 1.

VIRGINIA FIFE WRIGHT, 33 Larchmont Avenue, Wahan, Massachusetts. Stu-G 1, 2, President 4; Executive Board 1, 2, 3; Officers' Day Chairman 1; Christmas Cotillion Chairman 2; Leaders' Workshop 2, Chairman 3; NSA Executive Board 3; Junior Welcome Chairman 3; Representative to Faculty Committee on Orientation and Guidance 3, Students and Student Affairs 4.

ANNA LOUISE WURZBACHER, 14 Cornish Street, Lawrence, Massachusetts. Graduate Nurses' Club President 3, 4.

## Y

ELECTRA YANKOPOULOS, 147 Lafayette Street, Fall River, Massachusetts. Orthodox Club 1, 2, President 3, 4; Ellen Richards 2, 3, ISC Representative 4; Modern Dance Club 1; Dorm Board Council 2, 4; House Senior 4.

MARGARET ALICE YOUNG, 3 Vanderburgh Avenue, Larchmont, New York. Home Economics Club 2, 3, 4; Representative to Massachusetts Home Economics College Clubs 3, 4.

## Z

BARBARA ANN ZONIS, 14 Wilmore Street, Mattapan, Massachusetts. Hillel 1, 2, 3.

JOAN CLAIR ZWEIGBAUM, 185 Osborn Avenue, New Haven, Connecticut. Hillel 1; Spring Spree 3; Skit Night 3; House Council 4.



# MICROCOSM BOARD

Risa Rickman } Janet Shapiro }	-----	Co-Editors-in-chief
Marjorie Melnick	-----	Associate Editor
Nancy Carroll } Louise Harian }	-----	Advertising Co-Managers
Sheila Orlinsky	-----	Assistant Advertising Manager
Sarah Stout	-----	Art Editor
Constance Costigan } Mary King } Roslyn Mateles }	-----	Associate Art Editors
Sylvia Chiesa	-----	Business Manager
Elaine Gaysunas	-----	Circulation Manager
Judith Berman	-----	Assistant Circulation Manager
Irma Goldman	-----	Executive Secretary
Ruth Lane	-----	Literary Editor
Penelope Karageorge	-----	Assistant Literary Editor
Judith See	-----	Photography Editor
Judith Davis	-----	Assistant Photography Editor
Barbara August	-----	Publicity Chairman
Helen Jean Addison	-----	Technical Editor

# JUNIOR STAFF

Ann Burack	Janice Kline
Joan Casey	Roberta Pliner
Jeanne Connelly	Emily Post
Joan Dexter	Deanna Rothschild
Barbara Glass	Martha Sartain
Nancy Herbach	Phyllis Schuman
Yalta Isenberg	Marjorie Slater
Maxine Kern	Lilo Stargardter

# SOPHOMORE STAFF

Jane Drooker	Elaine Paulson
Patricia Dubiel	Ruth Resh
Nancy Greene	Marion Webster
Carole Merkatz	

# FACULTY CONSULTANTS

Mr. Raymond F. Bosworth  
Miss Virginia L. Bratton  
Mrs. Isabella K. Coulter  
Miss Viola G. Engler  
Mr. Dino G. Valz

## **HOTEL STATLER**

Boston, Mass.

Extends Greetings and Good Wishes  
To SIMMONS COLLEGE  
Its Students and Faculty

Visit Our TERRACE ROOM  
Dining and Dancing  
With Famed Bands

D. B. Stanbro  
General Manager

Proms, Parties, Teas  
Go Over Big at Boston's Fabulous

## **SHERRY BILTMORE HOTEL**

Mass. Avenue near Boylston St.  
P.S. Perfect room accommodations for  
your guests

Compliments of

## **ARTHUR ARMOND**

266 Brookline Avenue

BEacon 2-6236

## *The* **HI-DA-WAY**

"Boston's Nicest Eating Place"

In the heart of the theatre and shopping  
district.

Exceptional luncheon and dinner menus  
with a wide variety of luscious desserts.

An ideal spot for group meetings.

Open daily 11 A.M. to 8 P.M.

Henry J. Meagher, Your Host

3 Boylston Place, Boston—(Near Colonial Theatre)

TO THE CLASS OF '57  
OUR BEST WISHES

## **THE SHERATON PLAZA**

Boston

H. de F. Nyboe  
General Manager

JEWELERS FOR YOUR CLASS RINGS

## **DIEGES & CLUST**

**Manufacturing Jewelers**

226 Public Street

Providence, Rhode Island

Compliments of

## **LONGWOOD PHARMACY**

411 Brookline Avenue

Boston, Massachusetts

WEAR THE POPULAR  
WRIGHT AND DITSON "SADDLES"

Smart two-tone style oxfords with leather uppers. Plain toe. Rubber soles. The original Saddle shoes that smart girls list as a "must have" the year round.

**WRIGHT & DITSON**

462 Boylston St., Boston 16, Mass.



Famous for

GOOD FOODS  
DELICACIES  
PERFUMERY

**S. S. PIERCE CO.**

Store at 133 Brookline Avenue

*The Delmar Company*

*Printers of the*

'57 MIC

44 Winn Street  
Woburn, Massachusetts

WO 2-1957

THE WARREN KAY VANTINE STUDIO, INC.

Official Photographers

for

THE 1957 MICROCOSM

132 Boylston St.

Boston, Mass.

661 Congress St.

Portland, Maine





NOT FOR CIRCULATION

